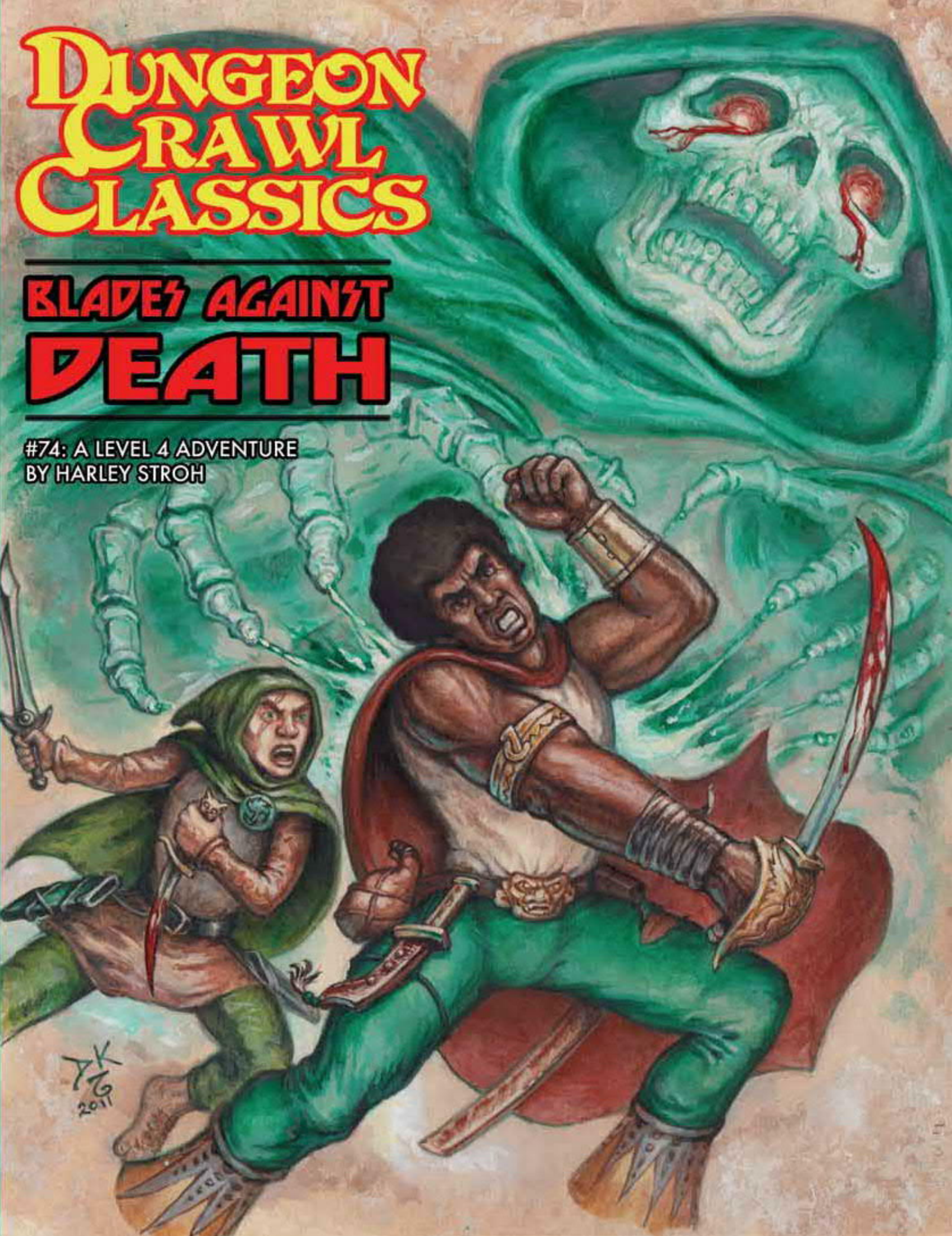


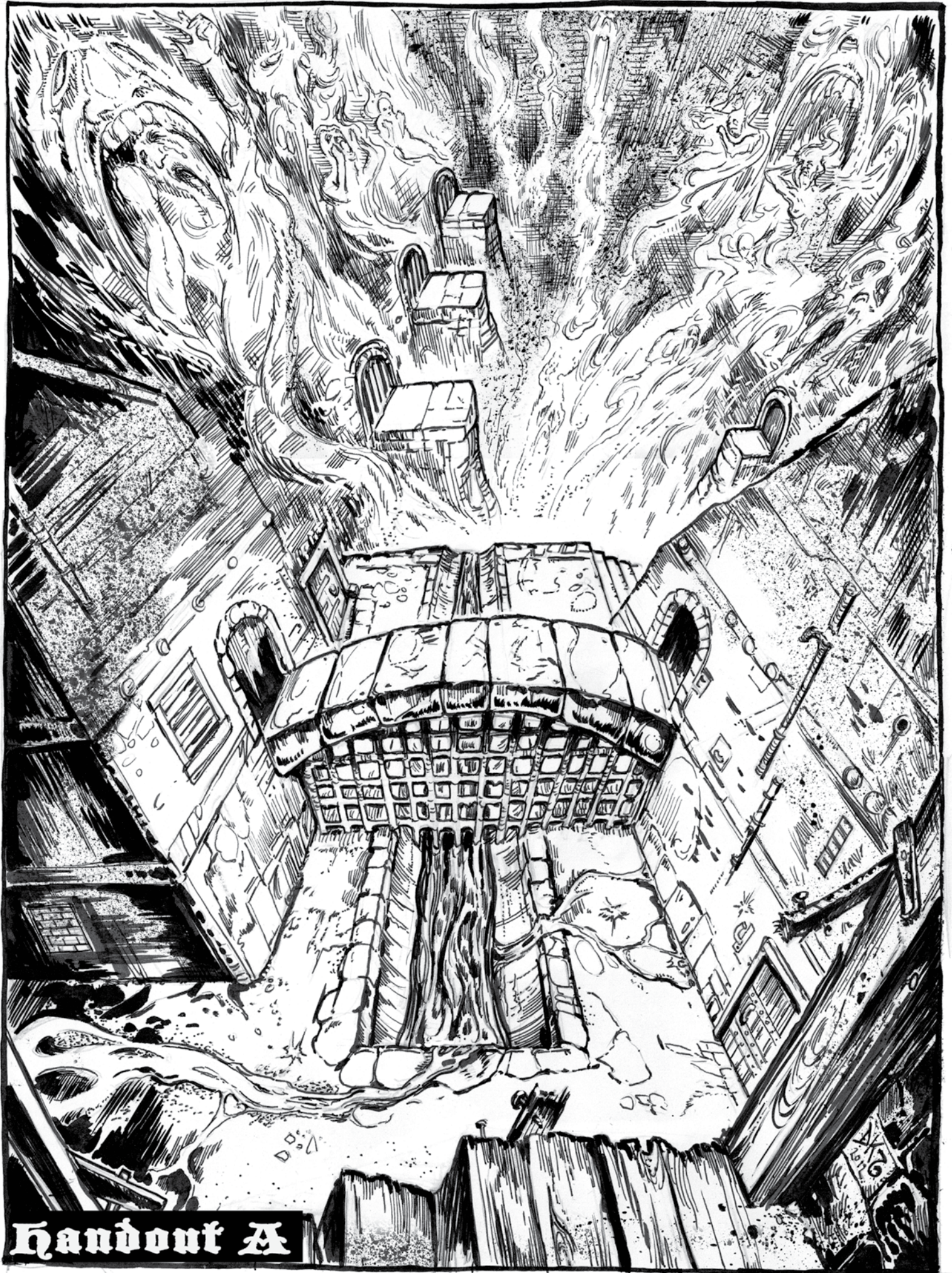
# DUNGEON CRAWL CLASSICS

## BLADES AGAINST DEATH

#74: A LEVEL 4 ADVENTURE  
BY HARLEY STROH







Handout A



# BLADES AGAINST DEATH

## A LEVEL 4 ADVENTURE

By Harley Stroh • Cover artist and cartographer: Doug Kovacs • Editor: Aeryn "Blackdirge" Rudel • Interior artists: Jeff Easley, Jim Holloway, Doug Kovacs, Stefan Poag, Michael Wilson • Art direction & layout: Joseph Goodman

Playtesters: The Expendables (Dave and Rae Brown, Patrick Carmichael, Doug Keester, Kate and Mark Zaynard), Tacticon 2011 (Tom Lindgren, Camdon Wright, Erik Roach, Keith Schooler, Ron Ringenbach, Stephanie Latta)

DCC RPG and this adventure are copyright © 2012 Goodman Games. Dungeon Crawl Classics is a trademark of Goodman Games. DCC RPG is published under the Open Game License. Refer to the OGL in this work for additional information.

[www.goodman-games.com](http://www.goodman-games.com)



*Harken to our tale, and bear witness to the folly of gods as they make fools of men.*

*-Traditional Punjaran street play prologue*

## INTRODUCTION

**R**emember the good old days, when adventures were underground, NPCs were there to be killed, and the finale of every dungeon was the dragon on the 20th level? Those days are back. Dungeon Crawl Classics adventures don't waste your time with long-winded speeches, weird campaign settings, or NPCs who aren't meant to be killed. Each adventure is 100% good, solid dungeon crawl, with the monsters you know, the traps you remember, and the secret doors you know are there somewhere.

This adventure is designed for 6 to 10 4th-level characters aided by stout-hearted hirelings. The adventure can also be attempted by a smaller party of 5th-level characters and will prove no less challenging. The urban environs offer thieves and charismatic scoundrels the opportunity to shine, but before the adventure is complete the strengths of each core class will be called to the fore.

## ADVENTURE BACKGROUND

**C**ontrary to the words of scholars, the foul city of Punjar is far from godless. Wide-eyed madmen stalk the streets pronouncing the end of days, mail-clad priests crush the skulls of heathens underfoot, and timorous virgins are offered up in sacrifice within sooty temples. For while the capricious gods of Aéreth turn a blind eye on much of the world, they lavish Punjar with their attentions. It is no accident that the most wicked city in the Known World is also the most god-haunted.

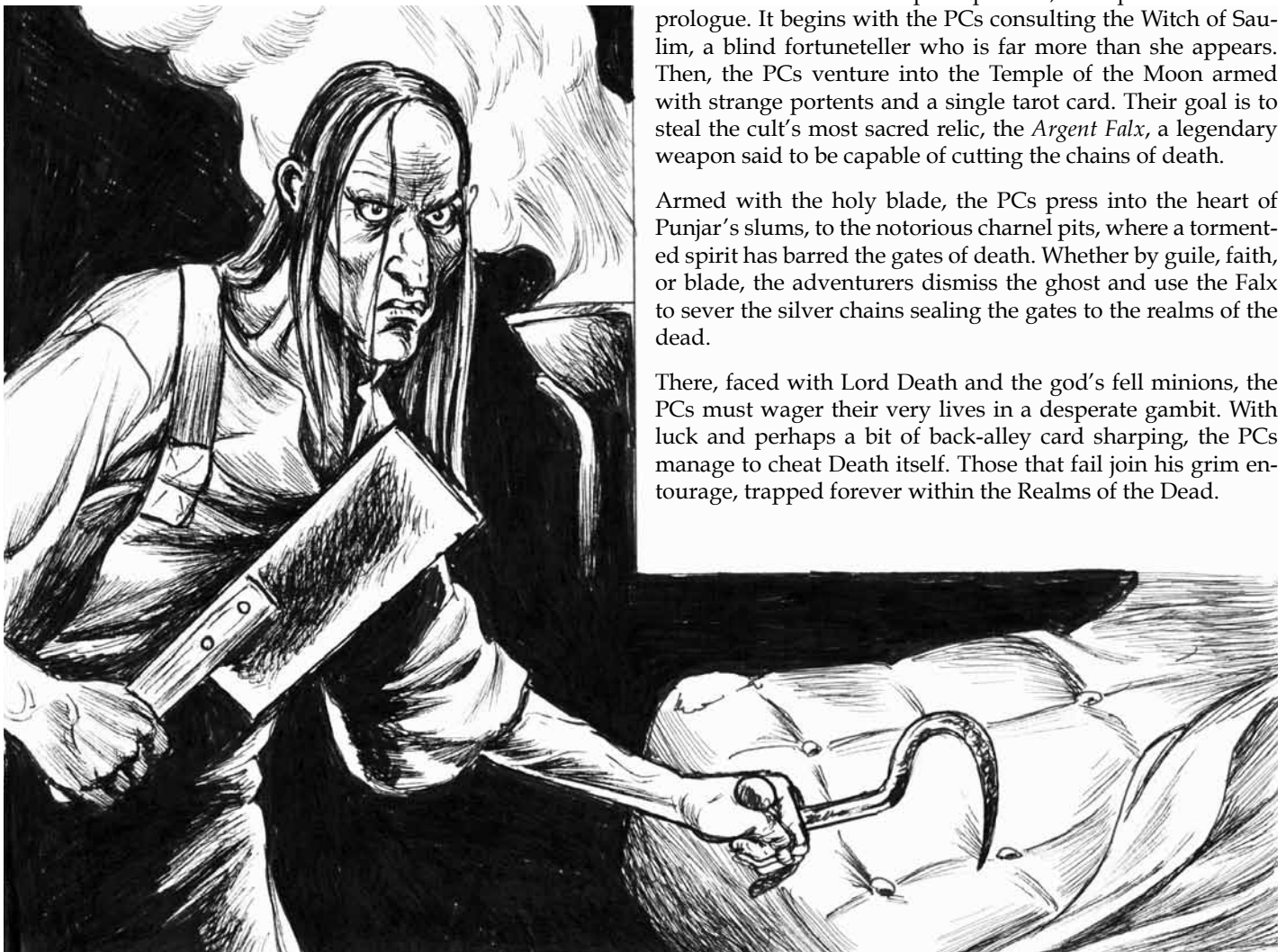
In *Blades against Death*, adventurers dare the impossible: to cross between the realms of the living and the dead. Whether for kith and kin or at the bequest of Punjar's noble sons, the PCs seek to liberate a soul from death's hoary grasp.

Such ambitions can hardly escape the notice of Punjar's jealous gods. The PCs' answer to challenges sent by the divine will determine whether they are mere pawns in the games of gods or masters of their own fates.

The adventure has three principle acts, each prefaced with a prologue. It begins with the PCs consulting the Witch of Saulim, a blind fortuneteller who is far more than she appears. Then, the PCs venture into the Temple of the Moon armed with strange portents and a single tarot card. Their goal is to steal the cult's most sacred relic, the *Argent Falx*, a legendary weapon said to be capable of cutting the chains of death.

Armed with the holy blade, the PCs press into the heart of Punjar's slums, to the notorious charnel pits, where a tormented spirit has barred the gates of death. Whether by guile, faith, or blade, the adventurers dismiss the ghost and use the Falx to sever the silver chains sealing the gates to the realms of the dead.

There, faced with Lord Death and the god's fell minions, the PCs must wager their very lives in a desperate gambit. With luck and perhaps a bit of back-alley card sharpening, the PCs manage to cheat Death itself. Those that fail join his grim entourage, trapped forever within the Realms of the Dead.



## RESURRECTION IN DCC RPG...



eturning from the dead does not come easily in the DCC RPG; indeed *raise dead* and the “speed bump resurrection” have no place in the Appendix N canon.

However, the provenance is clear: if Orpheus can venture into Hades in search of his love, so, too, can the PCs. But the chthonic quest is anything but easy, as Eurydice readily demonstrates. In order for the PCs to rescue a soul from death they will need to be clever, cunning, and courageous in turn.

Playtests of the adventure have proven especially grim. Entire parties have been lost while dicing with Death. If the PCs succeed in their gambit against the gods of Punjar, they will return fully worthy of the title of adventurers!

## ...AND DEATH IN PUNJAR



Death, the Lord of Dooms, is not the sole god of death worshipped in Aéreth. Nor is he the absolute embodiment of death. Rather, he serves as a sort of patron to Punjarans, invoked by those wishing to forestall or speed the act of death. As warden of the Realms of the Dead, he bears witness to all those that die within the wicked city, sending them on to the afterlife, and, in the rarest of instances, granting a reprieve from death.

Similarly, though the ghost of Moira bars the gates of death, this does not mean that all deaths have ceased in Punjar. Only those that die in close relation to the charnel pits are kept from their eternal reward (or punishment). For, as even the most simple of beggars can avow, there are hundreds of ways to meet death in the City of a Thousand Gates.

## ADVENTURE HOOK



he adventure is most effective if the PCs are questing for a means of rescuing an ally or favored henchman from death. Word on the street reaches the PCs that the Witch of Saulim, a blind fortuneteller working Squalor Court, knows of a way to breach the veil separating the dead and the living.

In the unlikely event that the PCs have no fellows to save (or simply none they care to rescue), they are approached by Orio the Elder, scion of the merchant house of Diagabe.

The overfed son of a prominent merchant lord, Orio offers the PCs 500 gp to serve as his agents. Astute PCs can drive a harder bargain, but Orio will go no higher than a total of 2,500 gp for the PCs' services, with a quarter paid in advance.

Orio directs the PCs to the Witch of Saulim, believing that the wretched crone holds the secret to stealing souls from death. Specifically, Orio seeks to win back his lover, the fair Zesi. He instructs the PCs to follow up on any threads that the witch might offer and to not return until they have Zesi in tow.

## SONS OF THE CITY: CHARACTER KNOWLEDGE IN PUNJAR



Depending on their training and social circles, PCs will know key secrets, rumors, and facts about the City of a Thousand Gates. This is an opportunity for the judge to play up the PCs' background as well as their adventuring career—as the Overlord often notes, you can take the beggar out of the slums, but he'll ooze filth to the end of his days.

Rather than share all the information prior to the adventure, judges should review the PCs' occupations and share insights and knowledge with the appropriate players as the adventure unfolds. This gives PCs a chance to shine outside of their class roles and helps bring the city to life. (“Ratvik the Mad? Of course I've heard of him! Mum would tell us stories about the Terror of Old Punjar to keep us out of the alleys ...”)

### Knowledge: Serfs, Peasants, and Common Freemen

**Raven Queen:** A goddess of death, also known as the Carnifex, patron to the criminals and lower classes. A shrine in her honor is hidden in the back alleys of Old Punjar, above the wicked Charnel Pits.

**The Witch of Saulim:** A fortuneteller that can be found in Squalor Court. Her strange prophecies are often bewildering but always unerringly true.

**Charnel Pits of Punjar:** The infamous charnel house used to dispose of Punjar's lower-class dead. Who can say how many dead passed through those cursed doors and how many spirits still stalk its halls. The pits were closed when their master succumbed to madness.

### Knowledge: Merchants and Artisans

**Temple of the Moon:** Found in the temple quarter (better known as the City of the Gods), the Temple of the Moon is a ziggurat dedicated to the fickle goddess Máni, the Maiden of the Moon. Stories hold that the priestesses smuggle their sacrifices into the temple via subterranean passages.

**City of the Gods:** Also known as the Temple Quarter, it is home to Punjar's most affluent cults.

### Knowledge: Priests, Nobility, and Sages

**Death, Máni, and the Carnifex:** Death, the Lord of the Dooms, is the most prominent of several death gods worshipped in the City of a Thousand Gates. The god has two daughters: Máni, goddess of the moon, and the Carnifex, patron of the lower classes and outcasts.

**Ratvik the Mad:** Ratvik Thirdson was an outcast of the noble House Tormanu, a family reviled for its inbreeding and decadent pleasures. Given to strange predilections and foul desires, Ratvik was deeded the Charnel Pits by the Overlord and tasked with disposing of Punjar's lower-class dead. All traces of Ratvik the Mad and his legacy vanished decades ago.

**Argent Falx:** A legendary weapon exalted by the Cult of Máni, the two-handed blade is said to be sharp enough to cut the shackles of death.

**City of the Gods:** See above.

## ENCOUNTER TABLE

Area	Type	Encounter
1-1	C/P	3 eunuchs Devotees
1-1a	C/P	Devotees
1-1b	C	2 eunuchs
1-2b	T/C	Bull idol spirit
1-4	T	Poison gas trap
1-4a	T	Poison needle trap
1-5	C	4 eunuchs
1-6	P/C	13 plague rats
1-7a	C	Master Bellows
1-9	P/C	The Abbotess 4 handmaidens Potiphar, captain of the Mánistales 10 eunuchs Devotees
Interlude	C	9 thief takers
2-2	T/C	10 phantom skeletal hands
2-3	P/C	Phantom scrivener
2-3a	C	Ossuary cloud
2-5	P/C	Mnom-Mothot 3 court skeletons 2 desiccated lovers Jester 3 skeletal troubadours
2-6	T/C	Ratvik the Mad
2-7a-d	T	Cremation furnaces
2-8	P/C	Moirra

## PLAYER START:

### THE HUNGER MOON TAROT

*You thread your way through the muddy maze of tents and market stalls, one hand on your blade, and the other on your coin purse. The air is thick with buzzing flies, dust, and the hoarse cries of weary traders hawking the last of the day's wares.*

*You spy your goal in the crimson light of the fading sun: a lowly tent stitched with patches and weird sigils. Violet mists and traces of incense drift from within. The beaded curtain of tiny skulls – mice, birds, and bats – confirms your suspicions. Certainly this must be the Witch of Saulim.*

If the PCs muster the courage to enter the tent, read or paraphrase the following.

*You draw aside the clacking curtain to reveal an emaciated crone, her white eyes staring into nothingness. A third eye is tattooed on her forehead and seems to blink when she wrinkles her face. Pointing with a long, bony finger, the hag bids you to sit on the threadbare pillows. Once you and your companions are settled she feeds more offal onto a glowing brazier and removes a tattered deck from a wrapped scarf. "What would you know of the plaques of Thoth-Ruin?"*

The scene begins with the Witch of Saulim offering insights and divinations into the past, present, and future. While the readings are sure to confound PCs (and players!), they also contain vital clues to help the adventurers determine their next course of action. The scene closes with the crone offering the PCs a gift to aid in their adventure.

Shuffle the four cards (see handouts on page 21) and place them before the players, face down. (Ideally the judge should prepare two decks of handouts on cardstock: the first for the Witch's reading, the second for the game of Death's Trump at the end of the adventure.)

*By some occult rite the hag discards cards from her deck until only four worn cards remain. She runs her bony finger across each in turn. "Turn the cards and cast the second sight of Thoth-Ruin upon the unknown."*

Read or paraphrase the crone's reading of each card as it is revealed:

**The Fool:** "I see a band of fools, daring to risk the kingdom of death. Two relics are demanded of this quest: a blade capable of cutting the chains of fate and a gate between the living and the dead."

**The Moon:** "The first step lies with the waxen maid, fickle and ever-changing. With every gibbous turn she blesses a crescent blade."

**The Beggar:** "The mad king stole the Crow Queen's daughter for his wicked court. Now her tormented ghost stands watch over smoking pits that stink of charred flesh and hair, barring the fiery gates of bone."

**Death:** "Death laughs at the ploys of the Raven and the Maid, one with portal, the other blade. Before your quest is done you shall gamble your lives with the hoary king."





Once all four cards are turned, read or paraphrase the following:

*The blind witch runs her fingers over each of the stained cards. "You cannot vie against death without aid. Choose one to be your totem, your standard. Choose wisely; for it shall be your banner unto the very gates of death."*

The party may pick any one of the four cards as their icon, which plays a role in the final scene of the adventure. Each card also carries its own blessing, which lasts the course of the entire adventure:

**The Fool:** Each PC receives +1d3 Luck points. These additional Luck point must be spent during the adventure or they are lost. Upon successful completion of the adventure, each PC receives +1 to his Luck.

**The Moon:** Each PC receives +1d7 hit points. Half of the additional hit points are made permanent upon the successful completion of the adventure.

**The Beggar:** Each PC receives +1d12 to a single saving throw or Luck check. PCs surviving the adventure receive a permanent +1 bonus to a saving throw.

**Death:** Each PC may add +1d12 to a single attack or damage roll during the course of the adventure. PCs that survive the adventure may add a permanent +1 bonus to rolls with a single chosen weapon or spell.

When the PCs exit the tent, they discover that many hours have passed. The moon, waxing gibbous, is sinking beneath the ward's mottled rooftops; tomorrow night's moon will be full. The Squalor Court is deserted save for the occasional mongrel pawing through the trash.

**Judge's Notes:** Armed with the witch's divination and their own knowledge of the city, the PCs should be able to puzzle out a path before them: first to the Temple Ziggurat of the Moon, to liberate the *Falx of Máni*, then to the Shrine of the Carnifex, found above the Charnel Pits in the foul neighborhood of Smoke.

If the readings and clues have fallen on deaf ears, divine intervention is called for, and a two-headed raven with a strip of cloth tied to its leg lands upon a nearby gibbet. The raven caws repeatedly at the PCs but must be induced down from its perch (any magic or a bit of food suffices). The scrap of cloth is inked on each side: on one side is the icon of a crescent moon within a triangle (symbolizing the Temple of the Moon); on the second side is the icon of the Carnifex (an axe) smudged with charcoal.

# THE TEMPLE OF THE MOON



ut from rough black basalt, the temple of the Moon Maid rises some two hundred feet into the sooty city air. Unlike some of the shining churches in the temple district, the Ziggurat of the Moon is squat and imposing, an ominous lurker in the City of Gods.

There are three principle entrances to the main temple:

- The Arch of the Moon, primary entrance to the temple (area 1-1a). The bronze gates are closed and barred at dawn and opened again at dusk.
- The sewers beneath the temple used by priests to dispose of waste and bodies (area 1-6). Thieves, beggars, and gong farmers are aware of the sewers beneath the temple.
- The Path of the Moon, a vertical shaft atop the temple plunging directly into the heart of the ziggurat (area 1-5). Guarded by temple eunuchs day and night, the shaft is the shortest and most dangerous route into the temple. Clerics and sages are aware of its existence.

The object of the PCs' quest, the blade named the *Argent Falx*, only appears when the goddess Máni manifests on the night of a full moon. The next full moon is on the night following the PCs' tarot reading. To steal the silvery blade, the PCs must make their way to the heart of the temple, wait for the lunar rite to reach its climax, and then steal the goddess' blade from beneath the noses of a horde of cultists.

Infiltrating the temple is most readily accomplished by stealth or deception, though PCs are free to employ whatever tactics they choose. Devoted to the lunar cycle, the cultists will do all in their power to ensure the ritual is completed, even if the temple is under assault. However, once the alarm is sounded, the temple eunuchs spring into action, dropping the bronze gates in area 1-1a then withdrawing to the Sanctuary of Máni (area 1-9) to defend the high priestess and her devotees.

Except where noted, the temple is lit with pitch torches that hiss and sputter as they burn. The walls and ceiling are covered in rough plaster, giving the interior a rounded, organic look. The floors of the temple are tracked with fine dust, disturbed by a hundred footprints. The air is smoky and heavy with the smell of incense. The chanting of priestesses (originating in area 1-9) can be heard throughout the temple complex, though only faintly in areas 1-6, 1-7, and 1-8.



# AREAS OF THE MAP

**Temple of the Moon:** *The enormous ziggurat looms above you in the dimming light. Silent devotees arrayed in hoods and bearing sputtering torches march up the long stairs to the temple's entrance. To the east the first sliver of the moon pulls itself from the sea like a pale god.*

**Area 1-1 – Arch of the Moon:** *The stairs rise to a darkened archway, flanked by fiery braziers spewing black smoke. The devotees march to the top of the stairs and offer obeisance to the carved arch before passing into darkness. A trio of towering sentries dressed in white robes and bearing wickedly curved glaives hold solemn watch over the silent procession.*

The devotees are distinguished by their pale ceramic masks. Any thief can pass the sentries with a successful DC 10 disguise check, but other PCs must either wear a white mask or succeed on a DC 15 Luck check to pass. All others are turned away by the eunuchs without a word. PCs attempting to talk or coerce their way into the temple are turned away by force.

If combat breaks out on the platform, the devotees panic, pushing and shoving each other in their flight. The panicked mob is dangerous to those lower on the stairs (Reflex save, DC 10 or be crushed by the panicking mob for 1d14 damage). If it suits the judge's plots, the PCs might briefly spy a key campaign personality among the fleeing throng.

If faced with overwhelming force, the eunuchs withdraw into the temple, calling to their fellows in area 1-1b to lower the gate. The PCs have two rounds before the gate is fully lowered. The gate's descent can be arrested with a DC 13 Strength check, but the PC or PCs must continue to make the check every round until the gate is propped or the windlass is reversed. Joining their fellows in area 1-1b, the eunuchs fight to the death.

**Eunuchs (3):** Init +0; Atk glaive +2 melee (1d10); AC 16; HD 4d8; hp 19, 16, 13; MV 30'; Act 1d20; SV Fort +1, Ref +0, Will +1; AL C.

**Devotees (5d5+10):** Init +0; Atk fist or dagger -1 melee (1d4-1); AC 10; HD 1d4; hp 4 each; MV 30'; Act 1d20; SV Fort +0, Ref +0, Will -1; AL C.

**Area 1-1a – Unholy Hall:** *The walls of this long hall are decorated with strange mosaics and fonts set into the rough plaster and lit by sputtering torches. A simple curtain hangs over an archway to your left, and farther down you can see a pair of doors on your right. Chanting and a strange pale glow emanate from the end of the hall.*

If the PCs have passed this far undetected, a steady stream of cultists is slowly proceeding north to area 1-9. The devotees pause at each of the three fonts to anoint their foreheads with holy oil and debase themselves before the unholy mosaics.

The fonts are spaced some 15 feet apart and each is cut from pale marble shot through with verdigris veins and carved in the semblance of a gaping demon maw. The oil sears the skin of any cleric professing a Neutral or Lawful faith (Fortitude save DC 13 or 1d7 damage and 1d3 points of disfavor). Similarly, wizards risk the ire of their patrons by anointing themselves with the unholy oil (Will save, DC 13 or -1 to spell checks until their patron is appeased). Others anointing themselves with the oil suffer no ill effects but suffer repercussions in area 1-9.

Rogues can fake anointment with a DC 5 pick pocket check. All others that abstain from anointing themselves with the oil must succeed on a DC 10 Luck check or draw the attention of the cultists. The cultists confront the PCs, calling them out as intruders. Faced with the threat of violence, the cultists call for the temple eunuchs then flee. The cultists fight only if cornered.

**Devotees (2d5+10):** Init +0; Atk fist or dagger -1 melee (1d4-1); AC 10; HD 1d4; hp 4 each; MV 30'; Act 1d20; SV Fort +0, Ref +0, Will -1; AL C.

**Area 1-1b – The Windlass:** *The small square chamber is dominated by a windlass and counterweight. A thick chain, wound round the windlass, rises through the ceiling.*

A pair of eunuchs guards this chamber, ready to assist their brothers in area 1-1 if summoned. Armed with scimitars and girded with banded mail and shields, the eunuchs take two rounds to lower the gate then leap to the defense of the temple.

Raising the gate fully takes three rounds, but even a single round turning the windlass is sufficient to allow PCs to squirm past.

A close inspection of the west wall reveals a narrow slot cut between the basalt blocks. Hidden within the slot is a simple wire, fashioned in the shape of a hoop. Pulling on the ring triggers a secret door. Unless spiked open, the secret door swings closed after 3 rounds.

**Eunuchs (2):** Init +0; Atk scimitar +2 melee (1d8); AC 17; HD 4d8; hp 16, 13; MV 30'; Act 1d20; SV Fort +1, Ref +0, Will +1; AL C.

**Area 1-2 – Barracks:** *The iron-bound doors open into barracks. Suits of banded armor stand in the corners of the room; shields, scimitars, and curved glaives hang from racks on the walls. Sleeping mats are arrayed throughout.*

This chamber is home to the Mánistales, the sacred eunuchs that ward over the temple. There are twenty mats crammed into the quarters, nearly covering the floor.

There are fifteen scimitars, ten glaives, fifteen shields, nine steel helms, and four suits of banded mail in the chamber, though the banded mail is sized for the enormous eunuchs and only fits the largest of PCs.

The eunuchs have foresworn all material wealth, but Potiphar, captain of the Mánistales, keeps a hoop of pearl prayer beads in a simple wooden case hidden in his sleeping mat. The pearl beads are worn smooth with use, and imbued with the wickedness of seventeen generations of devotees. The prayer beads are worth 250 gp and bestow a +1 bonus to spell checks when carried by a chaotic cleric or wizard. If sacrificed by a lawful or neutral cleric, the beads offset 500 gp worth of penalties.

**Area 1-2a – Storeroom:** *The small vaulted chamber is filled with crates, casks, and bales.*

This chamber serves as a storeroom for the temple's foodstuffs, wine, and bedding. There is nothing of interest to adventurers.

**Area 1-2b – Chapel of the Bull:** *Immaculate white robes hang along the walls of the small chamber. On the west wall is a simple shrine depicting the golden head of a bull with crescent horns. A cone of incense burns atop a short stone pedestal, filling the air with bitter smoke.*





The robes are the sticharions worn by the Mánistales. There are eight in all.

PCs donning the long robes can easily move among the devotees in area 1-9. However, deceiving a Mánistal or priestess requires a thief's DC 10 disguise check or a DC 15 Luck check.

Clerics immediately recognize the bull idol as Hujuki, divine manservant to Máni. Disturbing the shrine releases the spirit of the *bull idol*. A white phantom bull charges from the wall at the would-be despoiler, achieving surprise on a roll of 1-2 on a 1d3. The spirit of the bull idol vanishes after taking 15 points of damage.

A successful trample attack permits the bull spirit to attempt a gore attack, plunging its long, hooked horns into the target's belly. A PC struck by the gore attack must attempt a DC 13 Fortitude save. On a failed save, the bull idol spirit vanishes into the target, turning the PCs skin and hair milky white and infecting the PC with a bizarre curse: anytime the PC's skin is struck by the light of the full moon, he transforms into a raging, berserk minotaur. The body-wracking transformation takes place over 3 painful rounds and persists as long as the PC remains in the moonlight plus 1d12 rounds. In bull-man form, the PC gains +5d5 hp, +4 Strength, and cannot help mindlessly attacking the nearest creature. Lifting the curse requires a suitable adventure, as determined by the judge.

The golden idol is worth 750 gp or thrice that to any wealthy cultist of Máni.

**Bull Idol Spirit:** Init +3; Atk trample +2 melee (1d12 + gore); AC 20; HD 4d12; hp 15; MV 40'; Act 1d20; SA gore +4 melee (1d6 + *curse of the bull god*); SV Fort +4, Ref +0, Will +4; AL C.

**Area 1-3 – The Handmaidens' Chamber:** *The chamber is occupied by four beds made up with lavish pillows and heavy embroidered blankets. A simple iron coffer stands at the head of each bed. The chamber is unadorned, save for twelve polished silver plaques hanging on the walls.*

This chamber is home to the handmaidens of Máni, nuns in service of the high priestess. The handmaidens are found in area 1-9 during the night, retiring to 1-3 to sleep during the day.

Each coffer contains a handmaiden's effects. There is little of worth here, the handmaidens having given their material wealth over to the abbottess. The coffers are unlocked. In each the PCs find a simple white tunic, a black scapular, and a black habit. Beneath the clothing, PCs discover a whetstone, a vial of weapon oil, 1d5 candles wrapped in wax paper, 1d3 cones of incense, and 1d20 ep.

Given that there are only four handmaidens in the entire temple, disguising oneself as a nun is a challenge. The PCs will attract the attention of the other handmaidens and Mánistales any time there are more than four nuns in one place.

The silver plaques depict the twelve icons of Máni: the Ice Moon, Hunger Moon, Crow Moon, Hare's Moon, Planting Moon, Mead Moon, Thunder Moon, Dog Moon, Barley Moon, Blood Moon, Frost Moon, and the Long Night's Moon. Clerics and scribes will immediately recognize the references, and, by studying the placement of the plaques in the chamber, will be able to infer that the present phase is the Hunger Moon. PCs inspecting the Hunger Moon plaque find it depicts a gibbous moon rising behind a hanging gibbet. Atop the gibbet sits a two-headed crow.

Each plaque is worth 50 gp to collectors of esoteric oddities. If the plaques are melted down to conceal their origins, the raw metal is worth a mere 5 gp per plaque.

**Area 1-4 – Bower of the Abbess:** *The chamber has an arched ceiling some 20 feet in height. The floor is of polished white stone, with winding veins of crimson. Deep purple tapestries hang on every wall, embroidered with black, gold, and silver thread.*

*A lavish bed rests at the back of the chamber, hung with silken sheets, satin pillows, and the white fur of some great polar beast. A meditation pillow rests before a simple shrine: a polished marble crescent depicting the gibbous moon.*

During the night the abbess is found in area 1-9, offering up sacrifices to Máni. During the day she retires to her bower.

The curtains are embroidered with wicked sigils, diabolic signs, and sinister intimations. Searching behind the heavy curtains reveals two hidden passages: one to the south and north respectively.

PCs inspecting the shrine discover that the marble crescent is set upon an iron plate concealing a hidden vault. The plate's latch is protected by a poison gas trap; opening the latch without first rotating the marble crescent triggers the trap. All targets within 10 feet must succeed at two separate saves. First, a DC 13 Fortitude save or take 1d14 damage and slip into a deep torpor for 1d4 rounds. Second, a DC 10 Will save or be overtaken by a suicidal melancholy that compels the PC to kill himself before the next full moon. The melancholy can be cured by an appropriate quest of the judge's choosing.

The vault contains a polished wooden sword stand (intended for the Falx) and two simple copper coffers. The first coffer contains 527 gp; the second contains 291 sp and a false bottom concealing four platinum ingots (the equivalent of 100 pp).

**Area 1-4a – Reliquary of the Moon:** *The narrow passageway opens into a small room hung with a bizarre collection of religious implements. Elaborate censers, a collection of curved daggers, shelves laden with cones of wrapped incense, silver-threaded robes and habits, scarlet fascias embroidered with the sigils of demons, crimson stoles, and several copper rods.*

*Amid the jumble of implements you spy a simple teak box secured with a latch.*

This small chamber is home to the religious implements sacred to the cult. All serve a role in the cult's worship of Máni, but some may see use only once in a decade or more. All are meticulously cared for, polished and cleaned to a high sheen, with nary a trace of wear.

The teak box is 16 inches long, 6 inches wide, and 3 inches deep. The latch is locked and may be picked (DC 15). Failing to pick the lock triggers a poison needle trap. The target must succeed on a DC 15 Fortitude save or be overcome by an intense chill (-2 to Agility, 1d12 damage) and an irresistible desire to offer himself up in service to the goddess Máni. The Agility loss is regained at the rate of 1 point per day, but the urge to serve Máni can only be lifted by dedicating oneself to another deity (who will inevitably have its own agenda for the PC).

The box contains seven gems set within silver medallions,

each gem cut to resemble a phase of the moon. There are a total of eight divots; the missing eighth gem is being employed in the ritual in area 1-9. Each piece of jewelry is worth 100 gp; a complete collection of all eight is worth 1,000 gp.

A secret door is hidden in the north wall of the chamber. PCs inspecting the wall discover a narrow crack between two stones, scored as if by a blade or metal rod (which can be found amid the collection of implements). The secret door can be pried open with any dagger or short sword.

**Area 1-5 – Path of the Moon:** *A platform is set at the peak of the ziggurat. Four sentries stand watch in the moonlight, glaives at the ready as they gaze out over the smoke-laden city.*

PCs seeking to gain the top of the ziggurat unnoticed must employ either guile or stealth; the sentries sound their horns as soon as they spy assailants scaling the sloped walls. Armed with crossbows and glaives, the eunuchs fight to the death in defense of the ziggurat's peak and its secret.

A yawning pit is set in the center of the platform, descending through area 1-5a to 1-9. Set around the pit are four iron bars, each some 4 feet in height and topped with a polished silver mirror. The mirrors are used to reflect and direct the moonlight into the mirrored pit (area 1-5a), and the iron bars and mirrors are readily adjusted to capture the light of the moving moon. If all the eunuchs are slain and there is no one to correct and adjust the mirrors, the ritual in area 1-9 is perforce delayed until the moon is directly above the temple (roughly midnight).

**Eunuchs (4):** Init +0; Atk glaive +2 melee (1d10) or crossbow +0 ranged (1d6); AC 16; HD 4d8; hp 19, 16, 15, 12; MV 30'; Act 1d20; SV Fort +1, Ref +0, Will +1; AL C.

**Area 1-5a – Mirrored Shaft:** *The shaft plunges straight into the heart of the temple. The walls of the shaft are plated with sheets of silvery metal polished until they shine like mirrors.*

The sheer walls of the chimney are nearly impossible to climb without aid (DC 25). Ropes can be anchored on the mirror posts or secured by anchoring spikes in the ziggurat walls.

The chimney descends 40 feet before opening into area 1-9. It is another 20 feet down to the platform in the center of the chamber.

The sheets are masterfully wrought so that any light is both reflected and focused. When the full light of the moon shines into the shaft the effect is blinding. PCs caught within the shaft must attempt DC 15 Reflex saves or be blinded for 1d5 rounds. Regardless of the save, anything obstructing the shaft casts dramatic shadows into area 1-9.

**Area 1-6 – Sewer Grate:** *A rough hole is cut into the ceiling of the sewer pipe. The shaft climbs 15 feet before terminating at a rusty iron grate. The flicker of torchlight hints at a chamber beyond the grate.*

PCs climbing to the grate from below (climb DC 10, or by aid with rope and grapple) discover that the grate is locked on the far side; further, the grate is sticky with gore. Dried blood and bits of flesh and intestine hang from the iron bars. Picking the lock (DC 13) requires the thief to reach up through the grate and into the room above. Alternately, the grates can be torn free of their mooring with a Herculean DC 20 Strength check.



The temple uses the sewers to dispose of corpses, and the denizens of the sewers have come to expect these meals. The thirteen plague rats lurking in the chamber above regard hands craning through the grate as an invitation to sup.

At the first sign of disturbance of the grate, the ravenous rats pour down onto the unfortunate PC below. They cling to the PC, clawing and biting any exposed flesh. Every round make a single attack roll against any PC within the chamber. For every point equal or above the PC's AC, the rats inflict 1d3 damage. PCs in the chimney must succeed on DC 13 Will saves or plummet back into the sewers below.

Every PC suffering damage from a plague rat must make a DC 13 Fortitude save at the end of the adventure or contract a disease at the judge's pleasure.

**Plague Rats (13):** Init +3; Atk bite +5 (see above); AC 10; HD 1d4; hp 2 each; MV 25'; Act 1d20; SV Fort +0, Ref +2, Will +0; AL N.

**Area 1-7 – Dissection Chamber:** *This narrow chamber stinks of death. A large wooden butcher block runs along the southern wall. Cleavers, bones saws, meat hooks, and knives adorn the walls. The gore-ridden floor sucks and clings to your boots, and weird white worms crunch underfoot.*

This chamber is where Master Bellows dismembers corpses of sacrificial victims. It is also where he castrates those who would join the ranks of the temple eunuchs.

The chamber is lit by a pair of torches that sputter and sway with the slightest breeze. Unless the party takes extraordinary pains, they alert Master Bellows (in area 1-7a) to their presence.

**Area 1-7a – Master Bellows:** *The small chamber holds a simple straw mattress, made up with threadbare covers. A plain brazier glows dimly to one side, offering warmth and faint light to the sparse chambers.*

Master Bellows lurks in the shadows just inside the chamber, cleaver and meat hook in hand. He waits for the PCs to enter before attacking. If the PCs don't venture into the chamber, Master Bellows ambushes them in area 1-8.

Master Bellows resembles nothing so much as a walking cadaver. His stringy black hair hangs in clumps, his sallow skin clings to his bird-like bones, and his long, nervous fingers dance about like spider legs. He fights with a skill born of years of butchery, wielding both cleaver and meat hook to great effect.

The butcher-surgeon has served the temple for decades, disposing of bodies and castrating the eunuchs. If the PCs are disguised as devotees, they may be able to fool him for a short while, but subtle clues and missteps will quickly raise his suspicions. Fanatical in his devotion to Máni, Master Bellows cannot be bribed or frightened into submission.

He keeps his meager treasure hidden behind a loose stone set into the wall. Dwarves readily notice the stone as do other PCs carefully searching the south wall. The stone is easily worked free. Hidden within the niche are 35 sp, lovingly arranged in stacks, a moon hand-carved from bone, and a simple opal wrapped in a leather scrap. The opal is blessed by Máni and

grants its owner a +1 bonus to Luck checks.

**Master Bellows:** Init +1; Atk cleaver +4 melee (1d4+2) or meat hook +3 (1d6+2); AC 13; HD 6d6; HP 24; MV 30'; Act 2d20; SV Fort +2, Ref +2, Will +1; AL C.

**Area 1-8 – Lift Shaft:** *The murky passageway reveals open stone stairs that climb the west wall, rising into darkness. A lift rests on the north wall, suspended by chains some 15 feet off the floor.*

*A high-pitched, rhythmic chanting echoes from somewhere in the darkness above.*

The lift is used for transporting bodies from the sanctuary above; the flagstones beneath the lift are caked with dried blood and bits of gore.

The stone steps are slick and worn with age. Torches are set in the wall running along the stairs, casting flickering light over the chamber.

If Master Bellows manages to evade the PCs in area 1-7a, he follows the party onto the stairs, ambushing them from behind. Attacking with surprise, he attempts to hook the last PC in the marching order with a successful attack, using his second action die to hurl the target off the steps. The target must succeed on a Strength check versus Master Bellows (1d20+2) or be hurled to the ground below.

**Area 1-8a – Lift:** *A turnstile stands atop the platform. A pair of rusty chains runs from the turnstile through iron hoops set in the ceiling and down to the lift below.*

The turnstile is used to raise and lower the lift. A simple grate of iron encrusted with gore, the lift is used to transport bodies from the upper temple to the lower dungeon.

**Area 1-9 – Sanctuary of Máni:** *An enormous, vaulted temple opens before you. The floor of the temple is crowded with masked, chanting cultists. The devotees push and crowd each other for a view of the pit dominating the center of the chamber. The dark walls sway like opaque, gaseous clouds, speckled with stars.*

*A stone platform extends out into the center of the pit. Resting atop the platform is a pale marble altar. Hints of moonlight shine down from above, casting a soft glow over the sinister rites.*

*Towering temple guards glower over the crowd as masked priestesses cross towards the central platform, bringing the chanting to a fever pitch.*

With the coming of the full moon, the fevered cultists hope to receive the blessing of their fickle, ever-changing goddess. As the moon rises above the temple, the rite builds to a fever pitch, the cultists wailing and howling on bended knee. While the priestesses and devotees are focused entirely on the ritual, the ten eunuchs and their captain keep a close watch over the proceedings. If the PCs are hidden among the worshippers but don't follow along with the wailing devotion, the eunuchs immediately identify the heathens and remove them by force, casting them into the pit.

The rite takes place atop the platform in the center of the chamber. The pit surrounding the platform is 150 feet deep. It is 10 feet from the lip of the platform to the surrounding ledge; leaping the gap without a running start requires a DC 13 Strength check to catch the lip of the platform. It takes a





round for the PC to pull himself onto the platform. If the cultists are cleared away to permit a running start, the gap is easily cleared — unless the PC rolls a 1 or less on a Strength check, he vaults to the far side.

The altar conceals a secret chamber. A young girl draped in opalescent robes hides within, drugged into a dull torpor and awaiting apotheosis. A thorough inspection of the altar reveals a clever mechanism that causes the face of the altar to fall away and the base of the hidden chamber to rise swiftly to the level of the altar.

Though not immediately evident in the swirling chaos, three of the temple's four walls are covered in thick, black tapestries. Each hangs from ceiling to floor and is speckled with silver beads. Though incredibly cumbersome, the curtains can fetch as much as 3,000 gp in total.

As the moon reaches its apex in the sky, read or paraphrase the following. Note that PCs are free to take action at any point during the rite.

*Four masked handmaidens cross the temple floor towards the central platform, swinging smoking censers on long chains. Tendrils of incense crawl and writhe over the open pit. Suddenly, all is lit from above as pale moonlight pours down, washing over the cultists.*

*Four faceless priestesses circle the platform, mirrors cradled in their arms, collecting and reflecting the moonlight at the altar.*

*A final priestess places a glimmering jewel within the cascading beams, setting the gem ablaze from within!*

A moment later, the gem flares with searing rays, blinding everyone facing the central platform (Reflex save, DC 15, or blindness for 1d3 rounds). The abbottess' eyes are closed and the eunuchs are turned away, but the four handmaidens and cultists are all blinded for 3 rounds.

While the congregation is blinded, the abbottess trips the latch on the altar. The lid of the altar slides away and the radiant "goddess" emerges into the moonlight.

While there is nothing divine about the "goddess," what happens next certainly bears the mark of the gods. As the ritual reaches its climax, read or paraphrase the following:

*A searing light blossoms from the jewel, erasing all sight. When the light dims, you see a shining goddess atop the altar. She glows with moonlight, radiant locks pouring down her back. The goddess raises her arms in exultation, and the moonlight condenses into drops of quicksilver that rain down on the platform. The silver rain quickly coalesces in the goddess' hands, forming a curved blade: the fabled Argent Falx!*

The scene appears magical, but some elements are mere leg-erdemain. The false goddess raises her hands in exultation, glowing in the reflected moonlight. A milky white sickle sword appears in her hands. This is the fabled *Argent Falx*: the sickle sword capable of severing the bonds of death, and the PCs' goal.

The false goddess holds the blade up before the adoring worshippers, then presents the blade to the abbottess. At the abbottess' signal, eunuchs atop the ziggurat place a cover over the Path of the Moon, momentarily shrouding the temple in darkness. Her role complete, the "goddess" calmly steps off the platform, plummeting to her death in the darkness below.

As the torches are relit, the eunuchs move to surround the high priestess. They quickly escort her back to her bower, where she places the blade within the altar-vault (see area 1-4).

With the completion of the rite, the eunuchs usher the remaining devotees from the temple, close the great gate, and retire to their barracks. Throughout the remainder of the night and the next day, a crew of five guards patrols the temple. The handmaidens and abbottess retire to area 1-4 to hold a brief, solemn prayer giving thanks to Máni before retiring to their beds.

**The Heist:** Just how they manage to seize the *Argent Falx* and escape the temple is entirely up to the PCs. The would-be thieves must plan and execute the heist within a narrow window of opportunity. Creative players are sure to come up with any number of wild plans that will need to be adjudicated on the fly. As an aid to judges, here are some of the most likely tactics:

- **Violence:** The most direct means of obtaining the Falx requires no small amount of daring. PCs forcing their way onto the platform must fight their way through at least three eunuchs, the high priestess, and all four handmaidens. The devotees immediately panic, trampling one another in their haste to escape through area 1-1a. In order to evade pursuit, PCs will need to escape via the sewers (area 1-6) or up through the Path of the Moon (area 1-5).
- **Stealth:** There are several opportunities for cunning PCs to gain the blade by stealth. If the PCs hide in the wings of the temple (areas 1-3, 1-4, or 1-4a) and wait for the ritual to reach its conclusion, the abbottess brings the Falx directly to them. However, if the PCs wait too long and the Falx is placed within the vault in area 1-4, they quickly discover that hesitation is its own punishment.
- **Deception:** Successfully masquerading as handmaidens (or better, eunuchs) affords PCs the chance to come tantalizingly close to the blade. How and when the PCs make the snatch determines how much blood must be shed in their flight from the temple.
- **The Ransom:** PCs can easily seize one of the devotees and demand that the abbottess surrender the *Argent Falx*. Unfortunately, though the cultists plead desperately for their lives, the abbottess and her eunuchs give no thought to death in service of Máni. Rallying the temple to her defense, the abbottess commands the mob and the handmaidens to cast the PCs into the pit as offerings to their goddess. In the confusion, the abbottess and her handmaidens make a hasty retreat from the temple.
- **Scorched Earth Expedition:** It is not unlikely for the PCs to try to cut their way in and out of the temple. Unfortunately, this is also the least likely means of gaining the *Argent Falx* of Máni. Indeed, if the PCs slay the abbottess or any of her handmaidens, the surviving priestesses flee the temple. Retiring to the street before the temple, they summon the men-at-arms in the service of their patrons. Once suitably arrayed (with a force of no less than 100 mercenaries and blackguards) they scour the temple in search of the PCs.

In the advent of general melee, Potiphar and his eunuchs fight blindly to the death. The bulk of the devotees flee before the

PCs, unless rallied by the high priestess with a successful morale check (1d24+3 vs. DC 15; for every point of success, five cultists are rallied). The abbottess and her harem of handmaidens are not afraid to shed blood in the defense of the temple but withdraw in order to protect their blade or the high priestess.

Finally, those that anointed themselves with the sacred oil in area 1-1a are unable to take direct action against the priestesses. (Anointed PCs can still battle the Mánistales and devotees.)

There is the slim chance that the PCs recognize the false goddess for what she really is: nothing more than a simple (though beautiful) commoner. It is six hours before the torpor wears off and the girl can hold a conversation. She is Satia, the daughter of a wicked crime boss based in the Devil's Thumb. Her father, Evold Oathbreaker, heartily rewards PCs that return his daughter and offers an even greater bounty if the PCs are willing to capture his daughter's kidnappers for an audience with the godfather. A series of adventures in itself, this hunt sends the PCs throughout every ward in Punjar, ending at the citadel of House Caine-gont.

Finally, should the PCs somehow succeed in stealing the *Argent Falx* without slaying any cultist or losing one of their own, their skills and audacity is enough to cause even the god of thieves to smile. For the god's delight, the PCs receive a +1d4 bonus to Luck.

**The Argent Falx of Máni, ceremonial +3 two-handed sword (falx):** Int 5; AL C; bane: un-dead (19-20 crit threat range); communication: simple urges; special purpose: free souls from death; special powers: resist death (wielder receives +5 bonus to recovering the body checks), spell-like abilities (spell check: 1d20+3+wielder's personality modifier) *bless* 1/day, *detect undead* 3/day, *turn un-dead* 1/day. Appearing on the full moon, the Falx slowly fades from existence, vanishing completely by the new moon.

**The Abbottess:** Init +1; Atk *Argent Falx of Máni* +5 melee (1d10+3); AC 16; HD 4d8+4; hp 27; MV 30'; SP spellcasting (spell check +5, spells known: (level 1) *blessing*, *darkness*, *holy sanctuary*, *paralysis*, *word of command*; Act 1d20; SV Fort +2, Ref +1, Will +3; AL C.

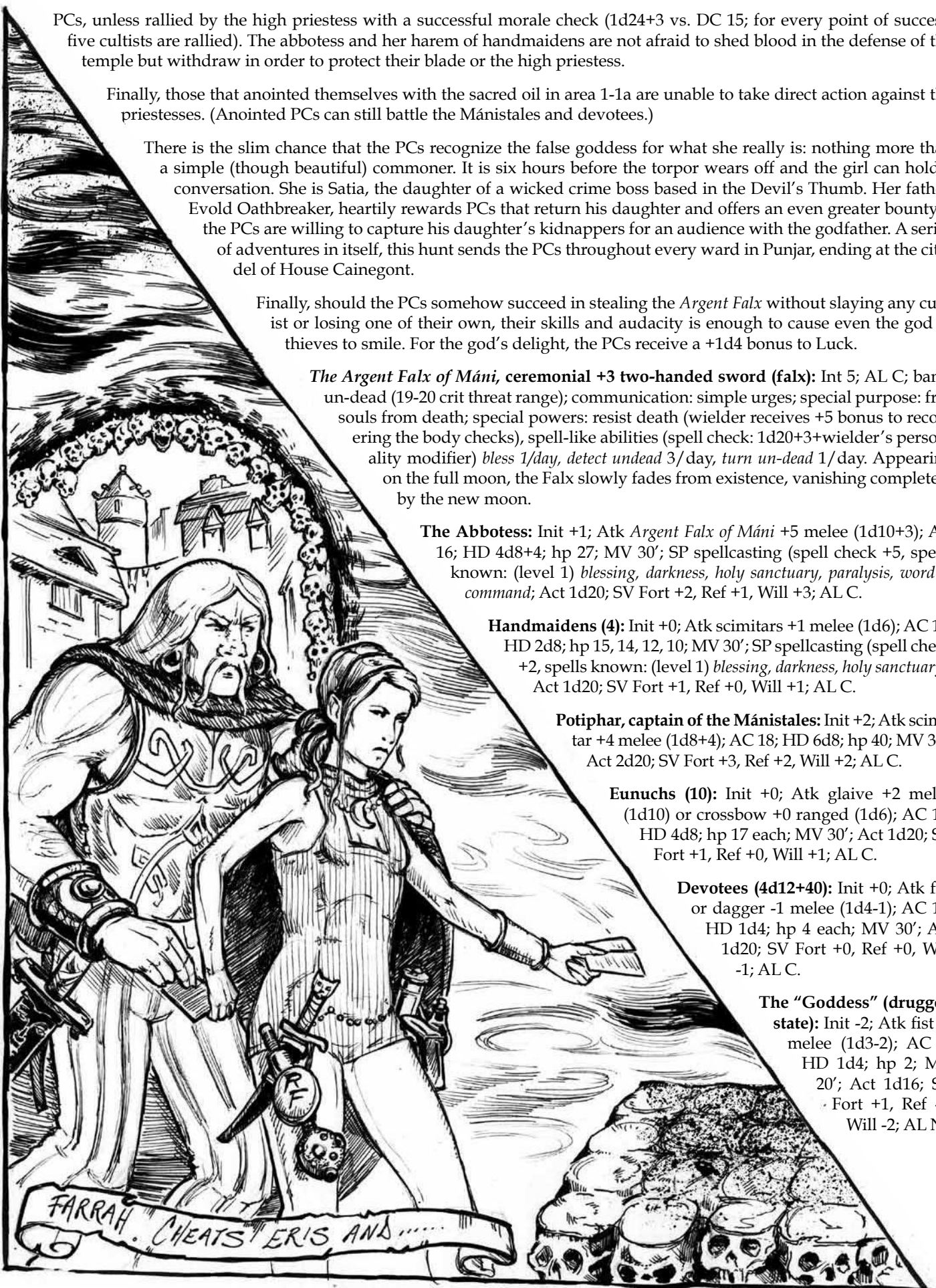
**Handmaidens (4):** Init +0; Atk scimitars +1 melee (1d6); AC 15; HD 2d8; hp 15, 14, 12, 10; MV 30'; SP spellcasting (spell check +2, spells known: (level 1) *blessing*, *darkness*, *holy sanctuary*); Act 1d20; SV Fort +1, Ref +0, Will +1; AL C.

**Potiphar, captain of the Mánistales:** Init +2; Atk scimitar +4 melee (1d8+4); AC 18; HD 6d8; hp 40; MV 30'; Act 2d20; SV Fort +3, Ref +2, Will +2; AL C.

**Eunuchs (10):** Init +0; Atk glaive +2 melee (1d10) or crossbow +0 ranged (1d6); AC 16; HD 4d8; hp 17 each; MV 30'; Act 1d20; SV Fort +1, Ref +0, Will +1; AL C.

**Devotees (4d12+40):** Init +0; Atk fist or dagger -1 melee (1d4-1); AC 10; HD 1d4; hp 4 each; MV 30'; Act 1d20; SV Fort +0, Ref +0, Will -1; AL C.

**The "Goddess" (drugged state):** Init -2; Atk fist -2 melee (1d3-2); AC 8; HD 1d4; hp 2; MV 20'; Act 1d16; SV Fort +1, Ref -2, Will -2; AL N.





# INTERLUDE: FLIGHT FROM THE TEMPLE



Unwilling to take the battle into the streets, the abbess and her eunuchs give up the chase once the PCs win free of the temple. However, if the adventurers should leave any trace or clue, it is only a matter of time before the abbess has her revenge.

With forethought and a little luck, the PCs have already scouted out their next step. If not, or if the PCs are incautious, they may draw unwanted attention to themselves. For the next week the streets are awash with thief takers hunting for the PCs.

There is a base 25% chance the thief takers find the PCs. This should be modified +/- 5% for precautions taken by the PCs (or that PCs *fail* to take). Additionally, judges should feel free to use the thief takers to prod the PCs into action.

Gruff, filthy men, the thief takers live on the edge of the law, one step removed from their prey. Girded in boiled leather and rotting hides, the rogues wield rusted, nicked blades in combat.

The thief takers stalk the PCs, waiting for an opportune moment to strike. They aim to kidnap the heroes, bearing them to the temple for the gentle ministrations of Master Bellows. Cowards and bullies at heart, the thief takers flee if they lose more than a third of their number in battle.

**Thief Takers (9):** Init +1; Atk short sword +1 melee (1d6+1) or dagger +1 melee (1d4+1); AC 13; HD 3d6; hp 10 each; MV 30'; Act 1d20+1d16; SV Fort +0, Ref +1, Will -1; AL C.

## THE CHARNEL PITS



With the Carnifex only recently released from her god-prison beneath Punjar's dusty streets, there is no established church dedicated to the goddess of death.

Instead spontaneous shrines appear throughout the neighborhoods of Old Punjar wherever the downtrodden and castoffs of the city's lower class are moved to call upon a higher power.

Thieves, slaves, and beggars will all know where to find the shrine dedicated to Punjar's patron of the outcast and untouchable: at the head of an alley leading to an abandoned crematorium and charnel house.

The charnel house has a horrific history. For decades the charnel house was tasked by the Overlord with disposing of the dead of Punjar's lower class. Crime lords employed the house's services when it became necessary to make enemies "disappear," and if the bodies forced into the ovens fought for their freedom or screamed aloud as the flames devoured their coffins, no one was the wiser.

The charnel house was run by Ratvik Thirdson, an outcast of the noble House Tormanu. Better known as Ratvik the Mad, he was the victim of twenty generations of inbreeding and decadent pleasures. Given to strange predilections and foul desires, Ratvik was obsessed with creating his own court, fashioned after the court of the Overlord.

Over the course of many years, Ratvik hand selected his court of ministers and advisors from the bodies delivered to the charnel house. Some were mummified, others reduced to skeletons then carefully reassembled with gold and silver wire, and others were merely mannequins, formed of rude homespun canvas and stuffed with the ashes of the dead. Ratvik consulted these ministers before every decision, and on dark, moonless nights he hosted wild revels with his court of the damned.

But no court is complete without its queen. Unsatisfied with the quality of the corpses delivered to his door, Ratvik spent years scouring the Old Smoke for a woman of inestimable beauty. He found his would-be queen in the guise of a simple fishwife named Moira.

A scant twenty years of age, Moira was already a mother when Ratvik the Mad stole her away. When she refused to join his court, Ratvik had her burned alive. With smoke searing her lungs, Moira cursed Ratvik to eternal un-death before succumbing to the flames.

Today the charnel pits are suffused with Ratvik's wicked spirit and the ghosts of a hundred other souls unable to pass Moira to reach the lands of the dead. Driven beyond the point of insanity, Ratvik lashes out at intruders, inflicting as much torture and anguish as possible.

To this day, Moira's family has maintained a simple shrine at the head of the alley, in the hopes that their offerings to the goddess of death might speed their mother's spirit to restful peace.

With the arrival of the PCs, the Carnifex has finally answered their prayers.

### PLAYER START: ASH ALLEY

*Surrounded by rotting tenements and shrouded in perpetual darkness, with raw sewage pooling underfoot, there is nothing to distinguish the alley from any of the hundreds like it that infest the Old City.*

*But your sources all concur: this alley once led to the charnel house of Ratvik the Mad, whose bloody lusts haunt the poor of Punjar to this day. Somewhere within – so the stories aver – stand the gates to the Realms of the Dead, awaiting those foolish enough to throw them wide.*

*With the filth sucking at your boots, you take your first steps into darkness.*

Inside the alley, the PCs encounter the shrine dedicated to the Carnifex:

*A simple shrine stands against the alley wall. A crude stone and mud mosaic depicts a two-headed raven. Several partially burned candles rest before a humble wooden bowl.*

Several ravens take flight as the PCs near the shrine, cawing

angrily as they alight atop the tenements. The wooden bowl contains sweetmeats, bits of jerky, a bouquet, and worn copper coins—offerings to the Carnifex.

PCs lighting a candle in respect to the Carnifex receive a +4 bonus to a single roll of their choice. This blessing can only be received by a PC once and should be shared with the players only after the PCs leave the area.

If all the candles are lit and a PC makes an offering of 50 gp or more, the PC receives a special dispensation from the goddess: the next time the PC is reduced to 0 hit points or less, the PC falls unconscious instead of dying. Assuming the body can be recovered, when the PC is inspected, he awakens with a single hit point.

If the PCs spend more than 10 minutes at the shrine, a young woman appears at the head of the alley. Slight of frame, emaciated, and dressed in filthy rags, she is the great-granddaughter of Moira. Sakia fears that the PCs are defiling the shrine and warns them off in a tremulous voice. Kind overtures quickly set her at ease, and if asked, she relays the history of the wretched charnel pits and her great-grandmother's shrine.

**Sakia:** Init +0; Atk fist or dagger -1 melee (1d4-1); AC 10; HD 1d4; hp 4; MV 30'; Act 1d20; SV Fort +0, Ref +0, Will -1; AL C.

## AREAS OF THE MAP

**Area 2-1 – Omens of Woe:** *The alleyway ends before a rotted wooden stairway. The stairway pitches down multiple flights to stained flagstones below. Sewage dribbles down the stone wall, filling the air with foul effluvia before pooling in the darkness below.*

Priests and clerics entering the area are immediately overcome by an intense melancholy. Terrible acts took place here; the charnel house and surrounding areas are saturated with wickedness. Devotees of gods are innately aware that their magic is weak here; all attempt to turn unholy suffer a -2 penalty.

Descending the stairs, the PCs discover the corpse of a crow. Partially devoured, the body flaps weakly, as if trying to take to the air. On closer inspection, the PCs realize the corpse is simply being dragged away by a small black rat.

**Area 2-2 – Slough and Grate:** *A trough of dark sewage runs down the center of the alley. The sewage runs beneath a stone arch, threading an enormous grate that spans the width of the entire alley. A single door reinforced with iron bands exits the alley to your right.*

Show the players handout A. The door to area 2-3 is locked but readily picked (DC 13). Stuck from years of disuse, a DC 10 Strength check must be attempted to pull the door open. Succeeding on the check, however, is not required, as the door bursts open from within, accompanied by a thundering shout: "Be gone!" PCs standing before the door must succeed on a DC 15 Reflex save or take 1d5 damage and be knocked back into the slough.

The slough of sewage runs beneath the grate to area 2-4. PCs willing to brave the filth can slip beneath the gate, but see below for complications to those disturbing the trough. Exceptionally strong PCs can bend apart the iron bars with a DC 20 Strength check, permitting passage.

PCs disturbing the slough awaken the tormented spirits that

saturate the charnel pits. Phantom blue skeletal hands erupt from the slough, seizing characters and hauling them beneath the fetid waters. Characters seized by the skeletal hands can catch hold of the iron grates with a DC 15 Strength check, but a second DC 17 Strength check, made either by the PC or his allies, is necessary to break free of the phantom hands.

Those failing to escape by the end of the second round vanish over the lip of the charnel pits (area 2-4), only to reappear as courtiers in Ratvik's Court of the Damned. See area 2-5 for details on the fate awaiting those unfortunate souls borne away by the phantom hands.

**Phantom Skeletal Hands (10):** Init +2; Atk grapple +4 melee (1d3+1); AC 12; HD 1d8; hp 7 each; MV 30'; Act 1d20; SP undead traits, condemnation (on second round of grapple, DC 17 Str check or transported to cloth doll confinement in area 2-5); SV Fort +3, Ref +3, Will +4; AL C.

**Area 2-3 – Place of the Scrivener:** *The walls of the small chamber are decorated with ornate stone carvings depicting fierce demons herding the damned towards a fearsome, leering toad-god. One by one, the carved figures are driven into the toad-god's gaping maw.*

*A simple wooden desk sits in the center of the chamber surrounded by stacks of ledgers. A quill pen rests in an inkwell atop a pile of tomes beside a small mortar and pestle.*

*A moth-eaten, patchwork curtain hangs over a doorway set in the far wall, waving softly in the darkness.*

This simple chamber was once home to the scrivener responsible for recording the identities of the dead that passed through the gates of the charnel pits.

Upon entering the chamber, a ghostly scrivener appears before the PCs, hunched over the high desk. The scrivener smiles a toothless grin and welcomes the PCs, asking for the names of the newest corpses. The scrivener records the names given (or the absence of names, "Oh, more J. Bloggs, I see!"), then holds up a tin pail filled with teeth and a pair of bloody pliers. He shakes the pail expectantly and gives the PCs an eager, knowing grin.

The scrivener aims to collect one tooth from each character. He can be duped if the PCs have other teeth to offer. If the PCs refuse to give up their teeth or try to bypass the scrivener out of ignorance, the phantom makes a growling demand: "Teeth." If this is ignored, the phantom erupts with fury, transforming into an enormous, gibbering monstrosity armed with a massive pair of brutish pliers and proceeds to take teeth by force.

If the scrivener succeeds in grappling a target, treat the target as prone the following round. After dealing 10 or more damage to any one PC, the phantom has successfully won its trophy and vanishes from sight.

An open ledger rests atop the desk. The names and occupations in the ledger are recorded in a rust-colored ink; wizards (and thieves, succeeding on a DC 12 Forgery check) readily identify human bone and blood as the ink's base. Skimming the last hundred entries reveals the entry: *Moira, fishwife*. Finally, whether or not the PCs tendered their names, their names and occupations are recorded in drying ink in the ledger.

**Phantom Scrivener:** Init +3; Atk grapple +8 melee (1d6+2) or



great pliers +4 melee (1d12+4); AC 16; HD 5d8; hp 23; MV fly 40'; Act 1d20; SP un-dead traits, tooth-taker (10+ dmg to one target with pliers results in stolen tooth and retreat); SV Fort +3, Ref +5, Will +4; AL C.

**Area 2-3a – Beyond the Veil:** Faint mists drift about the floor of the small chamber, condensing on the moldy walls and pooling on the flagstones. Moldering cotton sheets hang from rotten wooden shelves set along the walls. In the rear of the chamber a set of worn stone steps rises into the gloom.

The chamber was used to store bodies prior to cremation. The bodies were wrapped in cotton shrouds and doused in thick oil to stave off flies and vermin before being carried to the cremation ovens (areas 2-7a through d).

This terrible place is awash with tormented souls trapped by Moira's vengeful watch. Clerics innately sense that the souls are unable to pass into the afterlife, but are unable to divine the reason, save that something refuses to allow the souls to pass.

Anyone disturbing the cremation shrouds on the shelves unleashes a seething tide of black beetles. The size of coins, the beetles scurry for cover and darkness, their carapaces cracking underfoot. The beetles are the physical embodiments of trapped souls; close inspection of the ridged carapaces shows that each is uniquely fashioned in the shape of a screaming face. If a PC has died in the course of the adventure, he also has a beetle here, marked with ridges in the likeness of his screaming face.

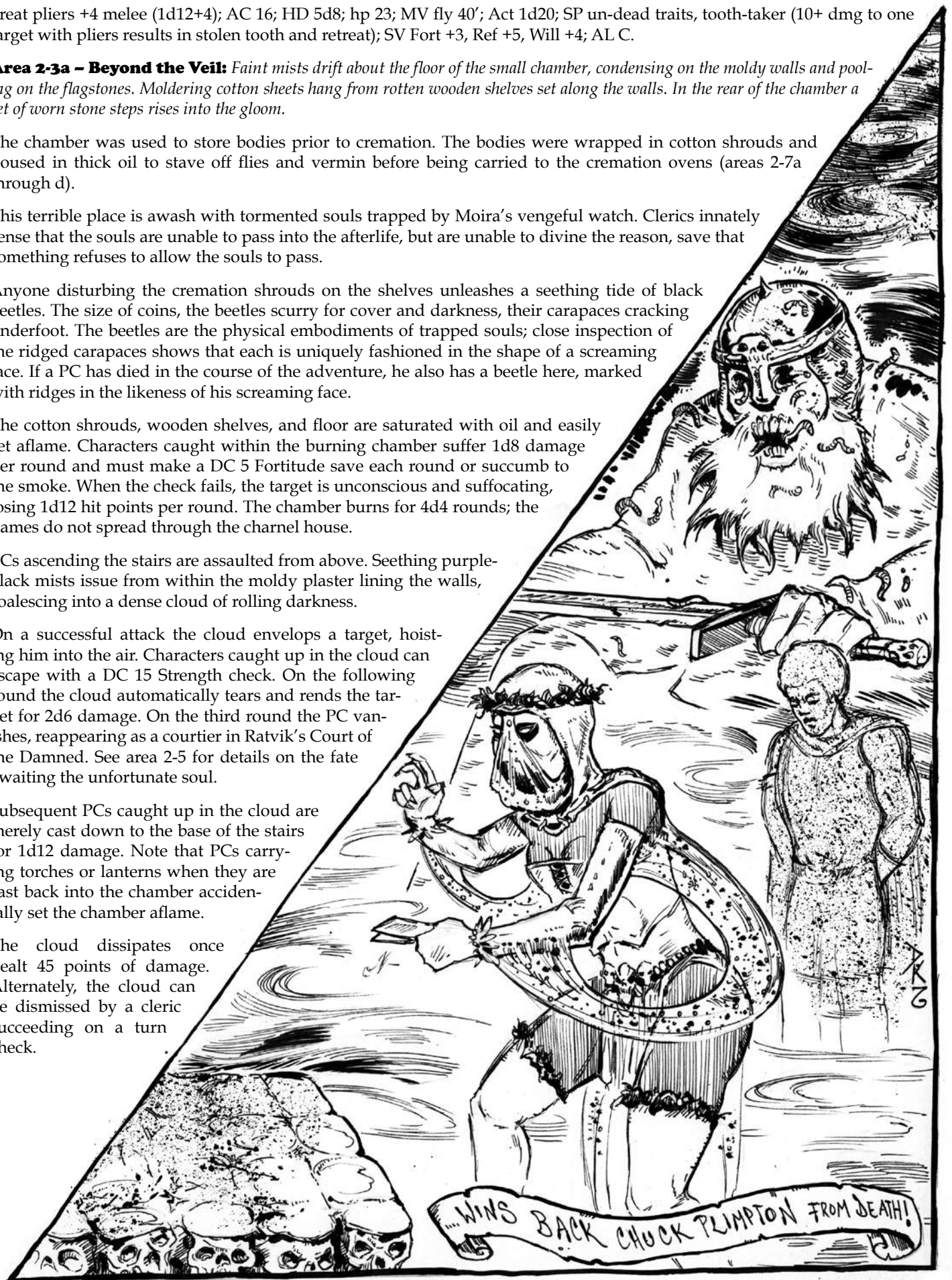
The cotton shrouds, wooden shelves, and floor are saturated with oil and easily set aflame. Characters caught within the burning chamber suffer 1d8 damage per round and must make a DC 5 Fortitude save each round or succumb to the smoke. When the check fails, the target is unconscious and suffocating, losing 1d12 hit points per round. The chamber burns for 4d4 rounds; the flames do not spread through the charnel house.

PCs ascending the stairs are assaulted from above. Seething purple-black mists issue from within the moldy plaster lining the walls, coalescing into a dense cloud of rolling darkness.

On a successful attack the cloud envelops a target, hoisting him into the air. Characters caught up in the cloud can escape with a DC 15 Strength check. On the following round the cloud automatically tears and rends the target for 2d6 damage. On the third round the PC vanishes, reappearing as a courtier in Ratvik's Court of the Damned. See area 2-5 for details on the fate awaiting the unfortunate soul.

Subsequent PCs caught up in the cloud are merely cast down to the base of the stairs for 1d12 damage. Note that PCs carrying torches or lanterns when they are cast back into the chamber accidentally set the chamber aflame.

The cloud dissipates once dealt 45 points of damage. Alternately, the cloud can be dismissed by a cleric succeeding on a turn check.





**Ossuary Cloud:** Init +4; Atk grapple +5 melee (special); AC 15; HD 10d8; hp 45; MV fly 45'; Act 3d20; SP un-dead traits, immune to non-magical weapons; condemnation (first grappled target: 2d6 dmg on second round, transported to area 2-5 on third round; subsequent grappled targets: 1d12 damage as dropped down stairs); SV Fort +5, Ref +0, Will +6; AL C.

**Area 2-4 – The Charnel Pits:** *The ditch of open sewage empties into a gaping pit that stretches down, out of sight. The pit is roughly 70 feet long and 30 feet wide and fashioned of worked stone at the lip that quickly recedes to reveal craggy walls. Strange purple mists writhe in the darkness below, curling up just below the lip of the pit.*

*The left wall of the pit is punctuated by a trio of platforms set into the wall, each opening to an archway. On the right is a single platform, lower than the others, also opening to an arch.*

The pit is an enormous rift of unknown depth, a gaping wound cut in the flesh of the earth. For decades Old City dwellers have used the pits to dispose of their dead, dumping the ashes and bones of cremated corpses into the seething mists.

PCs can exit the area via the locked, iron-bound door to the north (pick lock, DC 10 or DC 15 Strength check), through the open arch to 2-4a, or down the steps to area 2-6.

Daring PCs can also attempt to climb to any of the exposed platforms (DC 13). However, climbers are exposed to the foul, seething mists that sting lungs and eyes. Climbers can protect themselves by breathing through moistened cloth, but unprotected characters must attempt a DC 17 Fortitude save or suffer a hallucination:

1d7

### Hallucination

1

The PC stands before mighty Death seated atop his great stone throne. The god leans forward and blesses the PC with his touch.

2

Blue flames race up and down the PC's limbs. The PC must succeed on a DC 15 Will save or panic, falling from the wall in fright.

3

The PC sees a slight woman, bathed in a fiery light, standing before a great gate of scorched iron. She refuses to let the PC pass, transforming into a shrieking banshee wreathed in flames.

4

The PC sees his friends wrapped in cotton shrouds, doused in oil, and cast into roaring ovens. Screaming in agony, their bodies are reduced to skeletons that claw at the PC, dragging him into the flames.

5

The PC is in a mist-shrouded tavern playing at cards. One by one, four cards are turned over, with Death trumping all.

6

An unending, seething tide of corpses claw their way out of the mists below. On a failed Will save (DC 13) one seizes the PC's ankle, dragging him down into the mists.

7

Judge's choice. This can be one of the hallucinations above or one specifically tailored to the judge's campaign.



The hallucination lasts 1d3 rounds. Unless otherwise noted, the PC must make a successful climb check each round or pitch from the pit wall. Those falling into the swirling mists are never seen again.

PCs reaching any of the northern platforms find that each is barred with an iron gate. The gates are all locked, but easily picked (DC 10). Alternately, they can be bent asunder by a Herculean DC 20 Strength check.

**Area 2-4a – Ruined Guard Chamber:** *A trio of skeletons lie against the far wall. Armored in ruined chain mail and bearing pole-arms, the inanimate forms are all blackened with soot.*

*The walls, floor, and ceiling of the chamber are blasted clean, as if scoured by an intense, searing heat.*

This chamber once housed the charnel house's guards. The guards were destroyed by Moira's vengeful fury before Ratvik could harness the power of the charnel house's damned.

The skeletons do not animate, though traces of their souls still lurk about, seeking release. If the PCs inspect the skeletons, they hear soft, haggard voices whispering: *Free us.* If the PCs lean close to the skulls, they hear the words: *The hell-witch wards the gates of death. None may pass. And then finally, free us.*

The skeletons, armor, and weapons are all brittle and ruined from the heat. There is nothing else of interest in the chamber. If the skulls or skeletons are disturbed, three mortuary beetles (similar to the ones found in area 2-3a) scuttle away.

**Area 2-5 – Court of the Damned:** *Lit by flickering red candles, the chamber before you is home to a hellish court.*

*A long table sits in the center of the chamber, covered in crimson cloth and set for a lavish meal. Around the table sit a dozen-odd courtiers, each more bizarre than the last.*

*Several skeletons, their bones held together with copper and silver wire, sit with goblets raised in mid-toast. A pair of desiccated corpses leans close for a tender kiss. Bulky, shapeless forms covered in canvas and stitched with patchwork faces leer with frozen smiles. In the back of the chamber, a skeletal jester and a trio of desiccated troubadours wait eternally to entertain the court.*

*A robed mummy is frozen at attention beside a pair of lavishly carved chairs at the head of the table. All seem to await the master's arrival.*

Ratvik handpicked this odd assemblage of corpses to serve as his royal court. His work ground to a halt when he was unable to secure the affections or the corpse of Moira to serve as his queen.

If any of the PCs were stolen away in a previous encounter, they awaken here bound, gagged, and sewn inside a canvas doll but otherwise untouched. If multiple PCs were abducted during the course of the adventure, there is one shapeless canvas scarecrow for every captured PC. Captives can do little more than grunt and rock in their anchored chairs. Escaping from the bonds requires a DC 17 Strength or Agility check (one check can be made per round). Once a PC has snapped or slipped the bonds on one hand, it takes another full round to free himself completely.

As the first PC enters the chamber, the frozen tableau comes to un-life. The troubadours play a wild, cacophonous tune, the

jester prances around the table filling goblets with wine, and the robed mummy Mnom-Mothot bids the PCs to take places at the table, insisting that the feast is about to begin!

If the PCs take their seats at the table, the jester serves them wine, then doles out the first course: a greasy soup thick with chittering mortuary beetles (as found in area 2-3a). As the jester circles the table, ladling the horrific soup into bowls, Mnom-Mothot declares that the feast cannot possibly continue: the master's queen refuses to attend. Would the PCs be so good as to fetch her? Mnom-Mothot offers a key (to the locked gate outside area 2-7a) and gestures grandly in the direction of the ovens.

If the encounter devolves into combat at any point in the proceedings, the court fights savagely in the defense of Mnom-Mothot. The skeletons stab at the PCs with sharpened knives while the desiccated lovers grapple the PCs in amorous embraces and breathe their poisonous gasses into the PCs' lungs. The jester leaps and prances madly about the chamber, while the troubadours gang up on a single PC, beating him senseless.

Mnom-Mothot moves to a bound PC, curved dagger in hand, and tears off the canvas hood, revealing the hero. He threatens to kill the hostage unless the PCs stand down. His goal remains the same: send the PCs into area 2-8 to "deal" with Moira. If the PCs press the fight, Mnom-Mothot flees to area 2-6, alerting his master.

Mnom-Mothot wears a dark amulet that can absorb up to three turn un-dead attempts; at his command the amulet can counter any turn attempt made within 30 feet. Apart from the dark amulet, the courtiers wear a variety of faux jewelry worth some 50 gp (but that can be sold to a duped buyer for ten times this amount).

**Mnom-Mothot:** Init +0; Atk curved dagger +2 melee (1d4+2); AC 14; HD 5d8; hp 20; MV 30'; Act 2d20; SP un-dead traits, spellcasting (spell check +3, spells known: (level 1) *cantrip*, *magic shield*, *magic missile* (appears as searing black rays), *sleep*); SV Fort +2, Ref +0, Will +3; AL C.

**Court Skeletons (3):** Init +0; Atk knife +1 melee (1d3+2); AC 13; HD 2d8; hp 10 each; MV 30'; Act 1d14; SP un-dead traits; SV Fort +1, Ref +0, Will +1; AL C.

**Desiccated Lovers (2):** Init +2; Atk embrace +1 melee (1d3+1, Str check DC 15 to break); AC 13; HD 4d8; hp 16 each; MV 30'; Act 1d20; SP un-dead traits, kiss of death (Fort save DC 15, or 2d8 dmg); SV Fort +2, Ref +1, Will +2; AL C.

**The Jester:** Init +3; Atk springing strike +3 melee (2d6); AC 18; HD 4d8; hp 27; MV 40'; Act 2d20; SP un-dead traits, can use springing attack on any target within 15'; SV Fort +0, Ref +3, Will +2; AL C.

**Skeletal Troubadours (3):** Init +0; Atk strike +1 melee (1d8+2); AC 14; HD 3d8; hp 17 each; MV 30'; Act 1d20; SP un-dead traits; SV Fort +2, Ref +0, Will +2; AL C.

**Area 2-6 – Ratvik's Retreat:** Note that the entrance to this chamber is both locked and sealed with molten gold that has spilled out over the floor. PCs will immediately note that the door is hot to the touch. The lock can be easily picked (DC 10), but the door must be beaten down with a DC 17 Strength check or destroyed (25 hp). PCs can also enter by risking the

climb over the charnel pits (area 2-4) to the unprotected platform.

Once the PCs gain entry, read or paraphrase the following:

*The heat in the chamber is nearly overwhelming, the air heavy with fumes of molten metal that sting your lungs with every breath.*

*A grotesque wooden throne stands at the rear of the chamber. Carved in the semblance of a squat toad-god, the throne is burnt down to little more than charcoal. Scattered around the throne are scores of weapons, scorched black with heat.*

*A robed skeleton sits atop the throne, adorned with a golden crown. Like the throne, the skeleton and its robes are singed and flame-bitten.*

*The throne stands amid immense mounds of glittering coins that spill out in every direction. Where they touch the floor, the coins have melted and then hardened into marbled pools of gold, silver, and copper.*

*At the sight of your companions, the skeleton bids you to approach.*

This is where Ratvik the Mad is making his final stand, fending off Moira's fury. Decade by decade, Ratvik is slowly losing the fight. If he is distracted by anything more than conversation, Moira's spirit forces its way into the chamber, igniting an inferno (see below).

In a soft, rasping voice that sounds like crackling embers, Ratvik explains his plight: neither he nor any of the hundreds of other trapped souls can pass on into the afterlife so long as Moira guards the gates to the Realms of the Dead. Ratvik makes no claims to innocence but pleads that after so long for so many trapped souls the punishment no longer suits the crime.

Ratvik's moment of lucidity is fleeting. If the PCs hesitate before leaving, twin coals flare brightly in the skeleton's eye sockets and Ratvik decrees that since he cannot die the PCs must join him in un-death. With a wave of his skeletal hand, Ratvik commands the PCs to kill one another.

Should the PCs refuse his order, Ratvik the Mad directs the weapons scattered about the chamber to do his work for him. The blackened weapons fly from the floor, attacking at his will and defending him against attacks. Unfortunately, while distracted by the PCs, Ratvik cannot hold back Moira.

**Moira's Revenge:** With Ratvik distracted by the PCs, the raw fury of Moira's anger fills the chamber. Crackling bolts of electricity shoot through the chamber, limning the PC and Ratvik in ghostly blue flames. The temperature soars, searing the skin and lungs, threatening to incinerate PCs and Ratvik alike.

**Round One:** PCs girded in metal armor take 1d4 points of heat damage.



**Round Two:** As above, and PCs wielding weapons with metal hafts or pommels take 1d4 points of heat damage.

**Round Three:** As above, and clothing is set aflame; characters take 1d4 points of fire damage.

**Round Four Onward:** As above, and all creatures within the chamber must succeed on DC 15 Fortitude saves or take 1d12 points of heat damage. The pools of coins begin to soften.

The effects are cumulative. The raging heat ends with the destruction of Ratvik's physical form or when the PCs flee the chamber—the remnants of the ruined door fly back into place, reinforced by flying coins and weapons, barring return.

**Treasure:** Though there is a regent's ransom in precious metals littering the chamber, relatively few of the coins remain untouched by the all-pervasive heat. An inspection of the piles reveals the coins in the heart of the piles are fused into a solid slab of precious metal. PCs can skim off the untouched coins, collecting 2d10 sp, 3d10 cp, and 4d10 gp. Finally, the PCs are able to find 2d100 pp; all the platinum coins are untouched thanks to the metal's higher melting point, but many of the coins sank, becoming embedded in the molten mass of lesser coins.

If the PCs can conceive a plan capable of recovering the pools of solidified metals, the total mass is worth some 5,000 gp. (Unfortunately, after the PCs pass through area 2-8 to the Realms of the Dead, the ruins surrounding the charnel pits collapse, burying the chamber in tons of rubble and rendering the treasure unrecoverable.)

**Ratvik the Mad:** Init +3; Atk flying weapons +3 ranged (1d8); AC 15; HD 8d8; hp 52; MV fly 40'; Act 5d20; SP un-dead traits, cannot be turned while in the charnel pits; SV Fort +0, Ref +1, Will +6; AL C.

**Area 2-7a through 2-7d – The Ovens:** *An iron gate blocks the corridor. Through the thick, rusted bars you can make out a long passageway lit by a hellish glow. On the left is a series of seething cremation ovens; on the right, matching platforms extending out over the charnel pits.*

*Through the haze of heat and floating ash, you can make out an endless series of ghostly blue phantoms marching from the furnaces and across the platforms before plummeting into the charnel pits.*

The iron gate is locked but can be picked (DC 10) or torn from its bolts with a DC 20 Strength check. The key resides with Mnom-Mothot in area 2-5. The area description should be adjusted accordingly if the PCs succeed in entering by the platforms extending over area 2-4. The gates barring these platforms all share the same stats as the first.



Characters daring to get close enough to inspect the phantoms see that all are urchins, fishwives, gong farmers, beggars—the souls of Punjar’s lowest caste that were cremated here but are now unable to pass through to the afterlife.

The phantoms ignore the PCs, continuing their endless march. Characters reaching out to touch the translucent phantoms feel a hint of cold and passing melancholy, but otherwise suffer no effects.

The cremation ovens seethe with crackling embers but don’t present any threat to the PCs ... yet. This changes once the PCs disturb Moira’s resting place (area 2-8). When this comes to pass, the phantoms sink to their knees, wailing in terror, and the furnaces gout fiery embers at Moira’s command. As an attack action, she can cause up to two of the four furnaces to erupt in a single round. Choose the furnaces at random, assigning a 25% chance to each. Any PC caught within 10 feet of the furnace must make a DC 13 Fortitude save or take 1d12 points of fire damage and be hurled 10 feet to the south. PCs with the misfortune of being driven through an open gate onto the platforms above the charnel pits must attempt a DC 5 Luck check or fall to their dooms.

**Area 2-8 – Moira the Fishwife:** *Fallen bricks and debris litter the ground before a pair of partially collapsed furnaces. The heat is impossibly intense, but it is darkness not light that radiates from within. A feminine form limned in crimson flames stands silhouetted before the lapping tongues of darkness.*

This is where Ratvik imprisoned the young fishwife, and where—his advances spurned—he burned her alive. But Moira’s passion and fiery curses have proven stronger than Ratvik’s evil or madness; none of the charnel house’s dead can pass until Moira has been appeased.

Despite her fury, the spirit can still be reasoned with, and astute PCs are sure to come up with creative solutions. She can be convinced to end her curse if presented with evidence of Ratvik’s destruction (his golden crown is ideal) or by word of her descendents (demonstrating that her sacrifice was not in vain). She can also be dismissed with a turn check (judges are well within their rights to ask players to roleplay the exorcism). Finally, a very persuasive PC (personality check, DC 20; again, well roleplayed) can convince her that she has tortured herself enough, and that it is simply time to move on.

However, if the PCs are callous or cruel, they reap the hellish fruits of her torment. A hot wind bellows from somewhere within the darkness, and PCs glimpse the gates of death just before Moira’s form erupts into a roaring banshee. Once her ire is roused, Moira’s sole aim is to immolate the PCs, condemning them to her fiery fate.

The banshee leads off combat with a shrieking gout of flame that extends 20 feet down the hall (3d10 fire damage; Reflex save, DC 10 for half damage). In subsequent rounds she can use her searing touch against melee combatants or randomly trigger the furnaces in the hall (see area 2-7a through d for descriptions of this ranged attack).

Whether by guile or blade, PCs winning over Moira see the flames of darkness shrink and finally die, revealing a crackling bed of embers leading down a misty passage to a towering basalt gate. Emblazoned with a single skull, clerics and wizards immediately recognize this as the gate to the Realms of the

Dead. The gate is bound by a slim silver chain that is impervious to any force, save the *Argent Falx*.

With the chain severed, the PCs may step through the grim portal and be instantly transported to Death’s realm.

**Moira:** Init +5; Atk Searing touch +3 melee (1d10); AC 10; HD 7d8; hp 40; MV fly 40’; Act 2d20 (can be two touches or touch + oven flame); SP un-dead traits, gout of flame 1/day (see above); SV Fort +4, Ref +2, Will +6; AL C.

## THE REALMS OF THE DEAD



*You and your companions are enfolded in gray mists, like boundless funerary shrouds. Just as it seems as if the mists are endless, a crow caws from the gray void, and the mists part, revealing a towering stone throne.*

*A squat, bearded giant sits atop the throne, girded in a chalky white hauberk, a greatsword resting across his lap. A veiled concubine kneels on one side of the throne, and behind her the blind, tattooed crone whose portents spurred your quest.*

If the PCs came to free a key personality (or resurrect one of their own), he is standing silently behind the throne, bound in silver shackles. Additionally, if any PCs have died in the course of the adventure, they, too, stand behind the throne, also bound in silvery chains.

There is no encounter map of the Realms of the Dead, as there is no place for the PCs to go. No matter which way they turn or how far they flee, the PCs inevitably return to Death’s throne. Even divine aid or the blessings of a patron is of no use here. The PCs have entered Death’s kingdom, where even gods fear to tread.

Eris, the god’s demoness concubine and vicereine, stands to approach the PCs, asking them their business. Even if the PCs do not answer truthfully, she smiles knowingly behind her veil. Eris shares that while her master will not willingly part with his wards, he will gamble the souls of the dead—so long as the PCs are willing the stake one of their lives for every soul they wish to rescue.

At a single gesture from Death the Witch of Saulim steps forward, placing her deck of tarot cards atop a pedestal of skulls that appears from the mists. The vicereine proposes the simple game of Death’s Trump, a game familiar to any warrior, gambler, or thief.

Before dealing, Eris offers the PCs a chance to leave without their prize. An archway of skulls appears behind the PCs—the portal back to Punjar. If the PCs soldier on, she smiles devilishly and deals.

The rules are simple. Eris cuts the deck, leaving four cards face down. The PCs choose two cards, leaving two for Eris. The cards are turned over, one by one. Death trumps any single card, and a pair beats a single Death. If the PCs lose the hand, they can double down for the chance at another deal, provided they have more lives to wager. The judge is encouraged to use the handouts for play, having the players make their PCs’ picks.



Played fairly—with only the four original cards and no possible pairs—the PCs have only a 50% chance of winning any given hand. However, armed with the card given to them by the Witch of Saulim, the PCs can cheat, turning the odds in their favor.

Cheating requires a DC 15 pick pockets check. A failed check indicates the sharp was unable to find a window to hand-muck the deal, but wasn't caught cheating (save for a natural 1; see below). On a successful check, the PCs were able to swap their own card into their hand, permitting a pair of lesser cards, or the draw of Death (provided the PCs chose Death in the first encounter). If the PCs sub in a second Death card, they can still tie if Eris also manages to draw the Death card, requiring another ante and deal.

A natural 1 on the pick pockets check means the thief was indeed caught trying to cheat Death. Death gives a roar and erupts from his throne. The PCs have one and only one round to flee through the portal. If the PCs dally, even to whisk away their allies, Death strikes them down with his greatsword (automatic hit against 1d5 targets; Fortitude save, DC 20 or instant death; on success, a mere 4d20+10 damage).

If the PCs win the souls of the dead, whether by luck or by sharpening, Death snarls, the Witch of Saulim grins smugly, and Eris sprouts horns and bat's wings. The slain character steps forward, permitting the PCs to use the *Argent Falx*, separating

the silvery chains. Prudent PCs will likely take this opportunity to exit via Eris' portal, but those daring to wager again play against Death himself:

The god strides forward, and the pedestal, cards, and PCs grow to match his gigantic proportions. Death cuts four cards and permits the PCs to draw first. However, cheating before the god of Death is no easy matter, and rogues must succeed on a DC 20 pick pocket check to safely hand-muck the Death card. Death's wager is a single resurrection: the next time the PC dies he will return to life but will thereafter owe Death one year and one day of service. For their part, the PCs must again wager their souls.

## CONCLUSION

Fleeing through Eris' portal sends the PCs tumbling into the streets of Punjar. It is midnight, and the fat lamps flicker with crimson light. The scene is eerily normal—raucous sounds echo from nearby taverns and inns, cats hiss from oily alleyways, painted ladies and men beckon from shadowed eaves, and all seems right with the world. As the PCs regroup and begin to recover from their travails, they hear a singular caw, and turn in time to see a flying two-headed crow cross the moon.

This printing of DCC #74: Blades Against Death is done under version 1.0 of the Open Game License, and the System Reference Document by permission from Wizards of the Coast, Inc. Designation of Product Identity. The following items are hereby designated as Product Identity in accordance with Section 1(e) of the Open Game License, version 1.0: Dungeon Crawl Classics, DCC RPG, Mighty Deed of Arms, spell check, Luck check, spellburn, mercurial magic, corruption, disapproval, all spell names, all proper nouns, capitalized terms, italicized terms, artwork, maps, symbols, depictions, and illustrations, except such elements that already appear in the System Reference Document.

Designation of Open Content: Subject to the Product Identity designation above, such sections of creature statistics as derive from the SRD are designated as Open Gaming Content.

Some of the portions of this book which are delineated OGC originate from the System Reference Document and are copyright © 1999, 2000 Wizards of the Coast, Inc. The remainder of these OGC portions of these books are hereby added to Open Game Content and, if so used, should bear the COPYRIGHT NOTICE "DCC #74: BLADES AGAINST DEATH, copyright © 2012 Goodman Games, all rights reserved, visit [www.goodman-games.com](http://www.goodman-games.com) or contact [info@goodman-games.com](mailto:info@goodman-games.com)".

DCC #74: Blades Against Death is copyright © 2012 Goodman Games. Open game content may only be used under and in the terms of the Open Game License.

OPEN GAME LICENSE Version 1.0a

The following text is the property of Wizards of the Coast, Inc.

and is Copyright 2000 Wizards of the Coast, Inc. ("Wizards"). All Rights Reserved.

1. Definitions: (a) "Contributors" means the copyright and/or trademark owners who have contributed Open Game Content; (b) "Derivative Material" means copyrighted material including derivative works and translations (including into other computer languages), potation, modification, correction, addition, extension, upgrade, improvement, compilation, abridgment or other form in which an existing work may be recast, transformed or adapted; (c) "Distribute" means to reproduce, license, rent, lease, sell, broadcast, publicly display, transmit or otherwise distribute; (d) "Open Game Content" means the game mechanic and includes the methods, procedures, processes and routines to the extent such content does not embody the Product Identity and is an enhancement over the prior art and any additional content clearly identified as Open Game Content by the Contributor, and means any work covered by this License, including translations and derivative works under copyright law, but specifically excludes Product Identity; (e) "Product Identity" means product and product line names, logos and identifying marks including trade dress, artifacts, creatures characters; stories, storylines, plots, thematic elements, dialogue, incidents, language, artwork, symbols, designs, depictions, likenesses, formats, poses, concepts, themes and graphic, photographic and other visual or audio representations; names and descriptions of characters, spells, enchantments, personalities, teams, personas, likenesses and special abilities; places, locations, environments, creatures, equipment, magical or supernatural abilities or effects, logos, symbols, or graphic designs; and any other trademark or registered trademark clearly identified as Product

identity by the owner of the Product Identity, and which specifically excludes the Open Game Content; (f) "Trademark" means the logos, names, mark, sign, motto, designs that are used by a Contributor to identify itself or its products or the associated products contributed to the Open Game Content by the Contributor (g) "Use" or "Using" means to use, Distribute, copy, edit, format, modify, translate and otherwise create Derivative Material of Open Game Content. (h) "You" or "Your" means the licensee in terms of this agreement.

2. The License: This License applies to any Open Game Content that contains a notice indicating that the Open Game Content may only be Used under and in terms of this License. You must affix such a notice to any Open Game Content that you Use. No terms may be added to or subtracted from this License except as described by the License itself. No other terms or conditions may be applied to any Open Game Content distributed using this License.

3. Offer and Acceptance: By Using the Open Game Content You indicate Your acceptance of the terms of this License.

4. Grant and Consideration: In consideration for agreeing to use this License, the Contributors grant You a perpetual, worldwide, royalty-free, non-exclusive license with the exact terms of this License to Use, the Open Game Content.

5. Representation of Authority to Contribute: If You are contributing original material as Open Game Content, You represent that Your Contributions are Your original creation and/or You have sufficient rights to grant the rights conveyed by this License.

6. Notice of Copyright: Copyright: You must update the COPYRIGHT NOTICE portion of this License to include the exact text of the

COPYRIGHT NOTICE of any Open Game Content You are copying, modifying or distributing, and You must add the title, the copyright date, and the copyright holder's name to the COPYRIGHT NOTICE of any original Open Game Content you Distribute.

7. Use of Product Identity: You agree not to Use any Product Identity, including as an indication as to compatibility, except as expressly licensed in another, independent Agreement with the owner of each element of that Product Identity. You agree not to indicate compatibility or co-adaptability with any Trademark or Registered Trademark in conjunction with a work containing Open Game Content except as expressly licensed in another, independent Agreement with the owner of such Trademark or Registered Trademark. The use of any Product Identity in Open Game Content does not constitute a challenge to the ownership of that Product Identity. The owner of any Product Identity used in Open Game Content shall retain all rights, title and interest in and to that Product Identity.

8. Identification: If you distribute Open Game Content You must clearly indicate which portions of the work that you are distributing are Open Game Content.

9. Updating the License: Wizards or its designated Agents may publish updated versions of this License. You may use any authorized version of this License to copy, modify and distribute any Open Game Content originally distributed under any version of this License.

10. Copy of this License: You MUST include a copy of this License with every copy of the Open Game Content You Distribute.

11. Use of Contributor Credits: You may not market or advertise the Open Game Content using the name of any Contributor unless You

have written permission from the Contributor to do so.

12. Inability to Comply: If it is impossible for You to comply with any of the terms of this License with respect to some or all of the Open Game Content due to statute, judicial order, or governmental regulation then You may not Use any Open Game Material so affected.

13. Termination: This License will terminate automatically if You fail to comply with all terms herein and fail to cure such breach within 30 days of becoming aware of the breach. All sublicenses shall survive the termination of this License.

14. Reformation: If any provision of this License is held to be unenforceable, such provision shall be reformed only to the extent necessary to make it enforceable.

15. COPYRIGHT NOTICE

Open Game License v 1.0 Copyright 2000, Wizards of the Coast, Inc. System Rules Document Copyright 2000 Wizards of the Coast, Inc.; Authors Jonathan Tweet, Monte Cook, Skip Williams, based on original material by E. Gary Gygax and Dave Arneson.

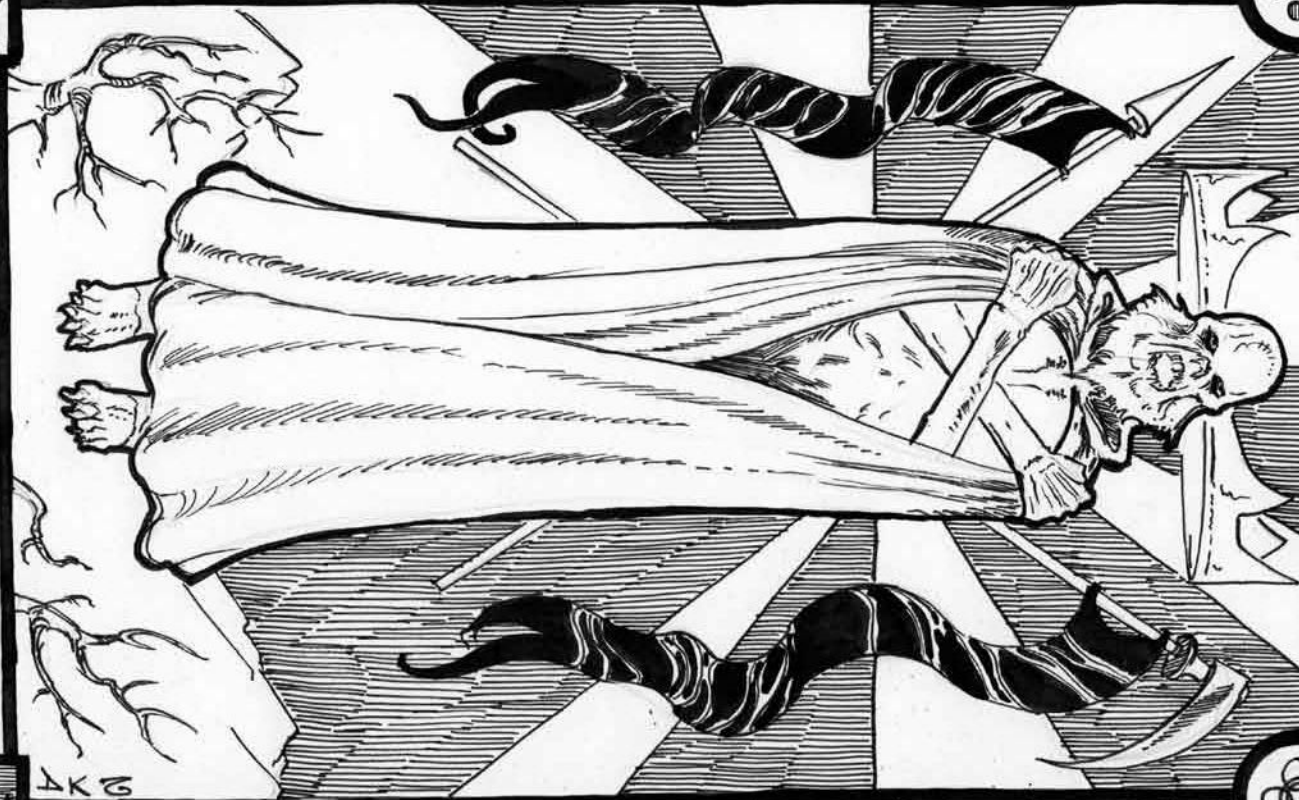
DCC #74: Blades Against Death, copyright © 2012 Goodman Games, all rights reserved, visit [www.goodman-games.com](http://www.goodman-games.com) or contact [info@goodman-games.com](mailto:info@goodman-games.com)

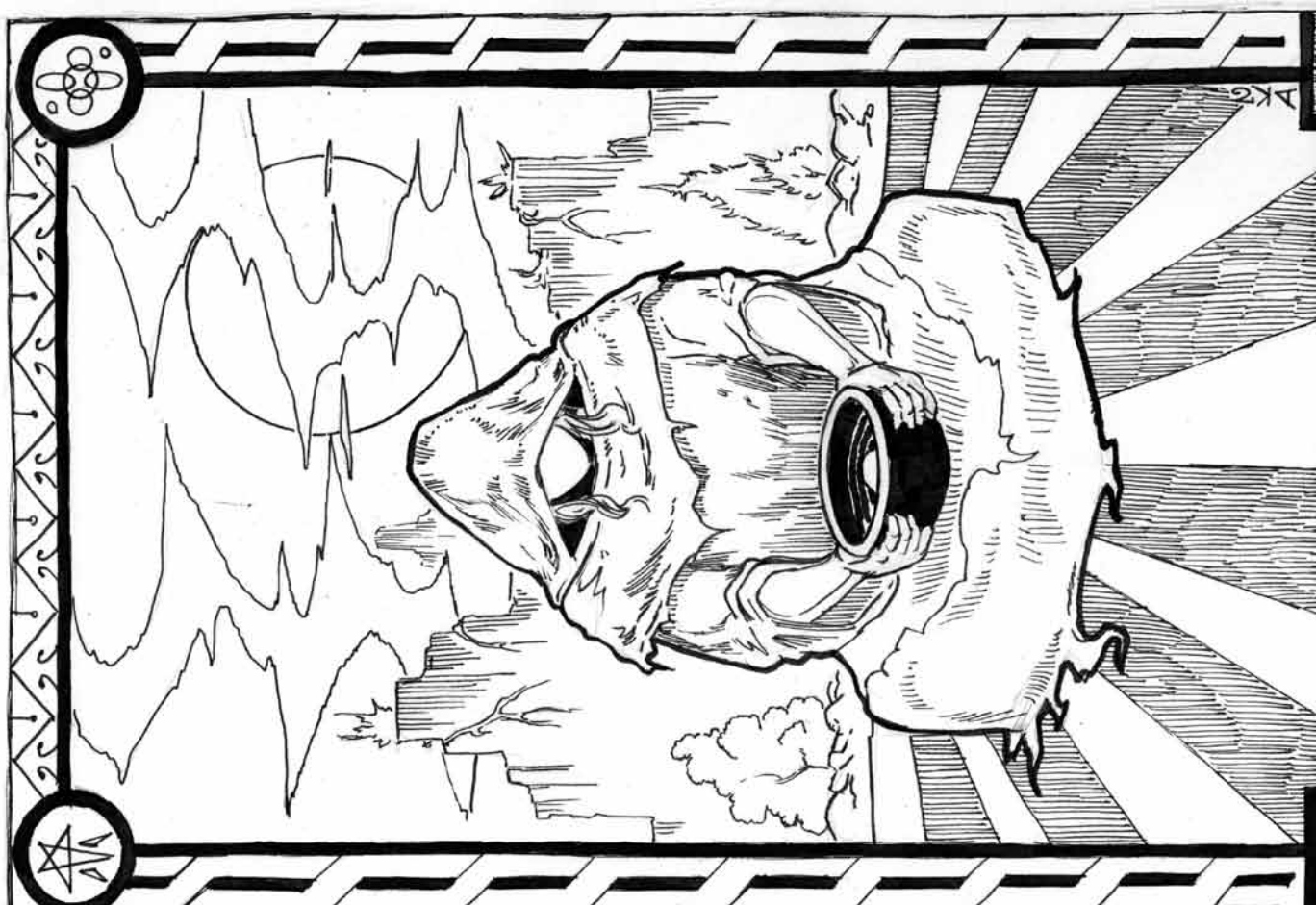


# THE FOOL

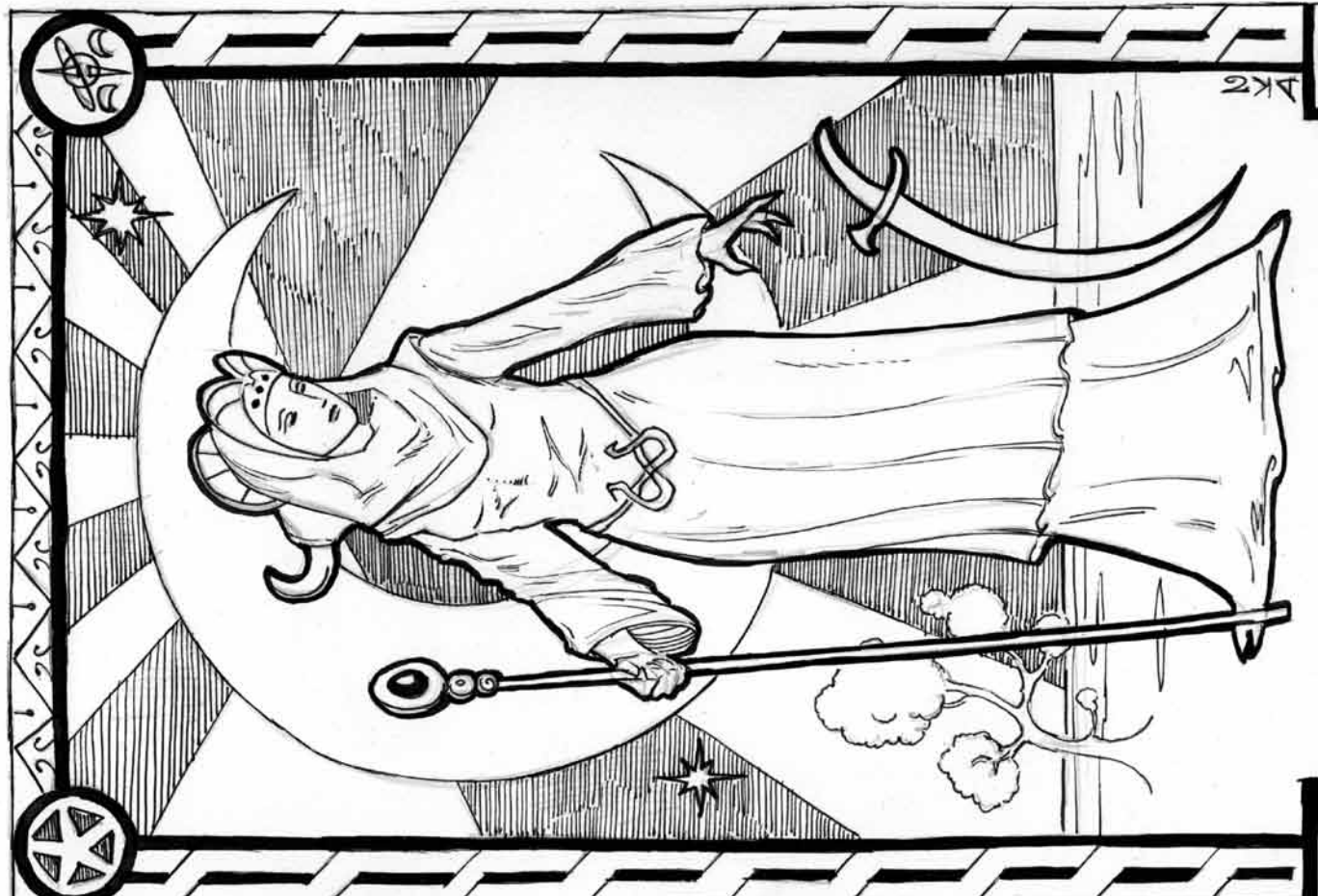


# DEATH

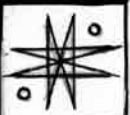




THE BEGGAR



THE MOON





# Temple of the Moon

AREA H

ATOP THE Ziggurate  
OPEN TO AREA 1-9  
1-5A



1-9

1-8

1-6

1-2

1-2A

1-2B

1-1A

1-1B

1-4

1-4A

1-4B

1-4C

1-4D

1-4E

1-4F

1-4G

1-4H

1-4I

1-4J

1-4K

1-4L

1-4M

1-4N

1-4O

1-4P

1-4Q

1-4R

1-4S

1-4T

1-4U

1-4V

1-4W

1-4X

1-4Y

1-4Z

1-4AA

1-4AB

1-4AC

1-4AD

1-4AE

1-4AF

1-4AG

1-4AH

1-4AI

1-4AJ

1-4AK

1-4AL

1-4AM

1-4AN

1-4AO

1-4AP

1-4AQ

1-4AR

1-4AS

1-4AT

1-4AU

1-4AV

1-4AW

1-4AX

1-4AY

1-4AZ

1-4BA

1-4BB

1-4BC

1-4BD

1-4BE

1-4BF

1-4BG

1-4BH

1-4BI

1-4BJ

1-4BK

1-4BL

1-4BM

1-4BN

1-4BO

1-4BP

1-4BQ

1-4BR

1-4BS

1-4BT

1-4BU

1-4BV

1-4BW

1-4BX

1-4BY

1-4BZ

1-4CA

1-4CB

1-4CC

1-4CD

1-4CE

1-4CF

1-4CG

1-4CH

1-4CI

1-4CJ

1-4CK

1-4CL

1-4CM

1-4CN

1-4CO

1-4CP

1-4CQ

1-4CR

1-4CS

1-4CT

1-4CU

1-4CV

1-4CW

1-4CX

1-4CY

1-4CZ

1-4DA

1-4DB

1-4DC

1-4DD

1-4DE

1-4DF

1-4DG

1-4DH

1-4DI

1-4DJ

1-4DK

1-4DL

1-4DM

1-4DN

1-4DO

1-4DP

1-4DQ

1-4DR

1-4DS

1-4DT

1-4DU

1-4DV

1-4DW

1-4DX

1-4DY

1-4DZ

1-4EA

1-4EB

1-4EC

1-4ED

1-4EE

1-4EF

1-4EG

1-4EH

1-4EI

1-4EJ

1-4EK

1-4EL

1-4EM

1-4EN

1-4EO

1-4EP

1-4EQ

1-4ER

1-4ES

1-4ET

1-4EU

1-4EV

1-4EW

1-4EX

1-4EY

1-4EZ

1-4FA

1-4FB

1-4FC

1-4FD

1-4FE

1-4FF

1-4FG

1-4FH

1-4FI

1-4FJ

1-4FK

1-4FL

1-4FM

1-4FN

1-4FO

1-4FP

1-4FQ

1-4FR

1-4FS

1-4FT

1-4FU

1-4FV

1-4FW

1-4FX

1-4FY

1-4FZ

1-4GA

1-4GB

1-4GC

1-4GD

1-4GE

1-4GF

1-4GG

1-4GH

1-4GI

1-4GJ

1-4GK

1-4GL

1-4GM

1-4GN

1-4GO

1-4GP

1-4GQ

1-4GR

1-4GS

1-4GT

1-4GU

1-4GV

1-4GW

1-4GX

1-4GY

1-4GZ

1-4HA

1-4HB

1-4HC

1-4HD

1-4HE

1-4HF

1-4HG

1-4HH

1-4HI

1-4HJ

1-4HK

1-4HL

1-4HM

1-4HN

1-4HO

1-4HP

1-4HQ

1-4HR

1-4HS

1-4HT

1-4HU

1-4HV

1-4HW

1-4HX

1-4HY

1-4HZ

1-4IA

1-4IB

1-4IC

1-4ID

1-4IE

1-4IF

1-4IG

1-4IH

1-4II

1-4IJ

1-4IK

1-4IL

1-4IM

1-4IN

1-4IO

1-4IP

1-4IQ

1-4IR

1-4IS

1-4IT

1-4IU

1-4IV

1-4IW

1-4IX

1-4IY

1-4IZ

1-4JA

1-4JB

1-4JC

1-4JD

1-4JE

1-4JF

1-4JG

1-4JH

1-4JI

1-4JJ

1-4JK

1-4JL

1-4JM

1-4JN

1-4JO

1-4JP

1-4JQ

1-4JR

1-4JS

1-4JT

1-4JU

1-4JV

1-4JW

1-4JX

1-4JY

1-4JZ

1-4KA

1-4KB

1-4KC

1-4KD

1-4KE

1-4KF

1-4KG

1-4KH

1-4KI

1-4KJ

1-4KK

1-4KL

1-4KM

1-4KN

1-4KO

1-4KP



AREA II



PLAYER  
START

THIS AREA NOT  
DESCRIBED IN TEXT

THIS BUILDING NOT  
DESCRIBED IN TEXT

PLUS  
A PLUS



# We're with the band.



**The band of adventurers, that is. Join us in the pages of *Dungeon Crawl Classics* adventure modules. Stand-alone, world-neutral, all new, and inspired by Appendix N. Learn more at [www.goodman-games.com](http://www.goodman-games.com).**



# DCC RPG



# DUNGEON CRAWL CLASSICS

## BLADES AGAINST DEATH

#74: A LEVEL 4 ADVENTURE  
BY HARLEY STROH

**Punjar: wide-eyed madmen stalk the streets pronouncing the end of days, mail-clad priests crush the skulls of heathens underfoot, and timorous virgins are offered up in sacrifice within sooty temples. But even the greatest of shining temples and the strangest of mystery cults don't dare to challenge the terrifying finality of Death.**

**Until now. In Blades Against Death, the adventurers cross between the realms of the living and the dead, and wager their souls in a desperate bid to steal a soul from Death's hoary grasp. To win over the God of Dooms, you must be the most daring, stalwart and cunning and – when all else fails – willing to test your blades against Death!**



**\$9.99** GMG5075

ISBN 978-0-9856811-7-3

